

# Polygenic prediction of coronary heart disease among 130,000 Mexican adults

## Online appendix

### Page

#### Webtables

1. CHD polygenic risk scores selected for evaluation 2
2. Baseline characteristics of 133,207 participants aged 35-79 years, by district 3
3. Baseline characteristics of 137,391 participants aged 35-89 years 4

Baseline characteristics of 133,207 participants aged 35-79 years by fifth of PRS by:

4. Tada *et al.* 5
5. Oni-Orisan *et al.* 6
6. Koyama *et al.* 7
7. Tcheandjieu *et al.* 8
8. Tamlander *et al.* 9
9. Patel *et al.* 10
10. Inouye *et al.* 11
11. Khera *et al.* 12

#### Webfigures

1. Pairwise correlations between the eight selected PRS 13

Odds of CHD per 1SD increase in each PRS:

2. By baseline age 14
3. By highest level of education 15
4. By waist-to-hip ratio 16
5. By systolic blood pressure 17
6. By diastolic blood pressure 18
7. By smoking status 19
8. By baseline diabetes status 20
9. By level of Indigenous American ancestry 21

Odds ratios per 1SD increase in each PRS among participants aged 35-79 years at recruitment, for the outcome of:

10. Baseline self-reported angina 22
11. Baseline self-reported heart attack 23
12. Baseline self-reported angina *or* heart attack 24
13. Baseline self-reported angina *or* heart attack, *or* death before age 80 with CHD listed as the *primary* cause of death 25
14. Death before age 80 with CHD listed *anywhere* on the death certificate 26
15. Death before age 80 with CHD listed as the *primary* cause on the death certificate 27

Sensitivity analyses

16. Varying the CHD outcome, with partial adjustments 28
17. Varying the CHD outcome, with full adjustments 29
18. Odds of CHD (varying CHD outcomes) per 1SD increase for the Patel *et al.* PRS, by sex 30
19. Odds of CHD (primary definition) among participants unrelated to the 3<sup>rd</sup> degree 31
20. Odds of CHD before age 90 years per 1SD increase in each PRS, among participants aged 35-89 years at recruitment 32
21. Odds of CHD before age 90 years by fifth of each PRS, among participants aged 35-89 years at recruitment 33

**Webtable 1: CHD polygenic risk scores selected for evaluation**

Authors / PRS ID in PGS catalogue/Ancestry	PRS characteristics	CHD odds or hazard ratio (95% CI)*	AUC (95%CI)
Tada et al <sup>w1</sup> /PGS000011/European	A PRS constructed using 50 SNPs and European GWAS. <b>GWAS:</b> European dominant (~95%) with a small proportion of Asian samples <b>Evaluation sample:</b> 100% European	HR per SD: 1.23 (1.18-1.28)	0.75 (no CI reported)
Oni-orisan et al <sup>w2</sup> /PGS004595/European	A PRS constructed using European GWAS and 164 genome-wide significant CHD risk SNPs from UKB and CC4D GWAS. It was evaluated among datasets that contains Hispanic participants (n=1538). <b>GWAS:</b> European dominant <b>Evaluation sample:</b> Multi-ancestry	HR per SD: 1.87 (1.19-2.95)	NR
Koyama et al <sup>w3</sup> /PGS000337/Japanese and European	A trans-ancestry PRS that used Japanese and European genetic information during construction. <b>GWAS:</b> European and Japanese dominant <b>Training sample:</b> Japanese dominant <b>Evaluation sample:</b> Japanese dominant	OR per SD: 1.84 (1.74-1.94)	0.67 (0.66–0.69)
Tcheandjieu et al <sup>w4</sup> /PGS003446/Multi-ancestry	A trans-ancestry PRS that used Hispanic, European and Japanese genetic information during construction using pruning and thresholding <sup>w5</sup> . <b>GWAS:</b> Multi-ancestry (Hispanics, African, Japanese, European) <b>Training sample:</b> European, African and Hispanics <b>Evaluation sample:</b> Hispanic	OR per SD: 1.43 (1.27-1.61)	NR
Tamlander et al <sup>w6</sup> /PGS001780/European	A PRS developed using a novel method, PRS-CS-auto. <b>GWAS:</b> European dominant (~80%) with a small proportion of Asian samples <b>Evaluation sample:</b> European	OR per SD (in UK Biobank): 1.72 (1.70-1.75)	0.79 (0.79–0.80)
Patel et al <sup>w7</sup> /PGS003725/Multi-ancestry	A trans-ancestry and multi-trait PRS derived using Hispanic, European, African and Asian genetic information. <b>GWAS:</b> Multi-ancestry (Hispanics, African, Japanese, European) <b>Training sample:</b> European <b>Evaluation sample:</b> Hispanic	OR per SD: 1.61 (1.53-1.70)	NR
Inouye et al <sup>w8</sup> /PGS000018/European	A meta-score based on the weighted average of 3 PRSs. <b>GWAS:</b> European dominant (~90%) with a small proportion of Asian samples <b>Training sample:</b> European dominant <b>Evaluation sample:</b> European dominant	HR per SD: 1.71 (1.68-1.73)	0.79 (no CI reported)
Khera et al <sup>w9</sup> /PGS000013/European	A PRS developed using LDpred2 <sup>w10</sup> with a large European dominant GWAS input. <b>GWAS:</b> European dominant (~80%) with a small proportion of Asian samples <b>Training sample:</b> European dominant <b>Evaluation sample:</b> European dominant	OR per SD (in training sample): 1.72 (1.67-1.78)	0.81 (0.81-0.81)

\* In the 'evaluation sample' unless otherwise stated. AUC=Area under the receiver operating characteristic curve. CHD=Coronary heart disease. CI=Confidence interval. OR= Odds ratio. HR=Hazard ratio. NR=Not reported

## Reference

- w1. Tada H, Melander O, Louie JZ, Catanese JJ, Rowland CM, Devlin JJ, et al. Risk prediction by genetic risk scores for coronary heart disease is independent of self-reported family history. *Eur Heart J*. 2016;37(6):561-567.
- w2. Oni-Orisan A, Haldar T, Cayabyab MAS, Ranatunga DK, Hoffmann TJ, Iribarren C, et al. Polygenic Risk Score and Statin Relative Risk Reduction for Primary Prevention of Myocardial Infarction in a Real-World Population. *Clin Pharmacol Ther*. 2022;112(5):1070-1078.
- w3. Koyama S, Ito K, Terao C, Akiyama M, Horikoshi M, Momozawa Y, et al. Population-specific and trans-ancestry genome-wide analyses identify distinct and shared genetic risk loci for coronary artery disease. *Nature genetics*. 2020;52(11):1169-1177.
- w4. Tcheandjieu C, Zhu X, Hilliard AT, Clarke SL, Napolioni V, Ma S, et al. Large-scale genome-wide association study of coronary artery disease in genetically diverse populations. *Nat Med*. 2022;28(8):1679-1692.
- w5. Choi SW, O'Reilly PF. PRSice-2: Polygenic Risk Score software for biobank-scale data. *GigaScience*. 2019;8(7).
- w6. Tamlander M, Mars N, Pirinen M, FinnGen, Widen E, Ripatti S. Integration of questionnaire-based risk factors improves polygenic risk scores for human coronary heart disease and type 2 diabetes. *Communications Biology*. 2022;5(1):158.
- w7. Patel AP, Wang M, Ruan Y, Koyama S, Clarke SL, Yang X, et al. A multi-ancestry polygenic risk score improves risk prediction for coronary artery disease. *Nature Medicine*. 2023;29(7):1793-1803.
- w8. Inouye M, Abraham G, Nelson CP, Wood AM, Sweeting MJ, Dudbridge F, et al. Genomic Risk Prediction of Coronary Artery Disease in 480,000 Adults: Implications for Primary Prevention. *J Am Coll Cardiol*. 2018;72(16):1883-1893.
- w9. Khera AV, Chaffin M, Aragam KG, Haas ME, Roselli C, Choi SH, et al. Genome-wide polygenic scores for common diseases identify individuals with risk equivalent to monogenic mutations. *Nature genetics*. 2018;50(9):1219-1224.
- w10. Privé F, Arbel J, Vilhjálmsson BJ. LDpred2: better, faster, stronger. *Bioinformatics*. 2021;36(22-23):5424-5431.

**Webtable 2: Baseline characteristics of 133,207 participants, by study district**

	<b>Iztapalapa n=82,192 (62%)</b>	<b>Coyoacán n=51,015 (38%)</b>	<b>All n=133,207</b>
<b>Men</b>	25,380 (31%)	17,958 (35%)	43,338 (33%)
<b>Age, years</b>	51.3 (12.0)	51.2 (11.5)	51.2 (11.8)
<b>Unrelated participants</b>	43,772 (53%)	32,103 (63%)	75,875 (57%)
<b>Ancestry admixture percentage</b>			
Indigenous American	68.9 (17.2)	63.5 (18.4)	66.8 (17.9)
African	3.3 (2.8)	3.7 (2.8)	3.4 (2.8)
East Asian	1.4 (1.5)	1.5 (2.3)	1.4 (1.8)
European	26.4 (15.4)	31.4 (16.9)	28.3 (16.2)
<b>Highest attained educational level</b>			
University/high school	10,085 (12%)	10,624 (21%)	20,709 (16%)
Middle school	20,585 (25%)	12,847 (25%)	33,432 (25%)
Elementary	40,821 (50%)	22,086 (43%)	62,907 (47%)
Other	10,651 (13%)	5,440 (11%)	16,091 (12%)
Missing	50 (0%)	18 (0%)	68 (0%)
<b>Smoking status</b>			
Never	41,904 (51%)	22,687 (45%)	64,591 (48%)
Former	15,545 (19%)	10,631 (21%)	26,176 (20%)
Current	24,698 (30%)	17,632 (35%)	42,330 (32%)
Missing	45 (0%)	65 (0%)	110 (0%)
<b>Alcohol intake</b>			
Never	18,222 (22%)	7,881 (15%)	26,103 (20%)
Former	11,688 (14%)	6,563 (13%)	18,251 (14%)
Current	52,261 (64%)	36,542 (72%)	88,803 (67%)
Missing	21 (0%)	29 (0%)	50 (0%)
<b>Physical measures</b>			
SBP, mmHg	126.5 (16.4)	128.5 (16.9)	127.2 (16.6)
DBP, mmHg	82.6 (10.0)	84.0 (10.3)	83.1 (10.2)
BMI, kg/m <sup>2</sup>	29.5 (5.1)	28.5 (4.9)	29.1 (5.1)
Waist-to-hip Ratio	0.91 (0.08)	0.90 (0.08)	0.90 (0.08)
<b>Laboratory measurements</b>			
HDL-C, mmol/L	0.99 (0.21)	1.02 (0.22)	1.00 (0.21)
LDL-C, mmol/L	2.45 (0.78)	2.47 (0.80)	2.46 (0.79)
Triglycerides, mmol/L	1.57 (0.67)	1.57 (0.64)	1.57 (0.66)
HbA1c, %	6.22 (1.76)	5.90 (1.61)	6.10 (1.71)
eGFR, ml/min/1.73m <sup>2</sup> *	101.3 (16.4)	102.2 (15.4)	101.7 (16.0)
<b>Prior disease †</b>			
Coronary heart disease	1,008 (1%)	893 (2%)	1,901 (1%)
Stroke	777 (1%)	637 (1%)	1,414 (1%)
Cancer	838 (1%)	742 (1%)	1,580 (1%)
Diabetes ‡	16,663 (20%)	8,133 (16%)	24,796 (19%)
Other §	5,109 (6%)	6,004 (12%)	11,113 (8%)

Numbers are n (%) or mean (SD). SBP=systolic blood pressure, DBP=diastolic blood pressure, BMI=body mass index, HDL-C=high density lipoprotein cholesterol, LDL-C=low density lipoprotein cholesterol, HbA1c=glycosylated haemoglobin A1c

\* Calculated using the 2021 CKD-EPI equation, based on NMR-measured creatinine levels.

† Self-reported previous diagnoses unless otherwise stated.

‡ Self-reported previously-diagnosed diabetes or glycosylated haemoglobin ≥6.5%.

§ Other diseases include self-reported emphysema, chronic kidney disease, peptic ulcer, liver cirrhosis, and peripheral arterial disease.

**Webtable 3: Baseline characteristics of 137,391 participants aged 35-89 years**

	<b>Men n=44,853 (33%)</b>	<b>Women n=92,538 (67%)</b>	<b>All n=137,391</b>
<b>Age, years</b>	53.1 (13.1)	51.8 (12.8)	52.2 (12.9)
<b>Resident of Coyoacán</b>	18,425 (41%)	33,947 (37%)	52,372 (38%)
<b>Unrelated participants</b>	24,979 (56%)	52,896 (57%)	77,875 (57%)
<b>Ancestry admixture percentage</b>			
Indigenous American	66.4 (18.1)	67.0 (17.9)	66.8 (17.9)
African	3.4 (2.8)	3.5 (2.8)	3.4 (2.8)
East Asian	1.4 (2.0)	1.4 (1.7)	1.4 (1.8)
European	28.7 (16.4)	28.2 (16.2)	28.4 (16.2)
<b>Highest attained educational level</b>			
University/high school	10,443 (23%)	10,421 (11%)	20,864 (15%)
Middle school	11,596 (26%)	22,116 (24%)	33,712 (25%)
Elementary	18,694 (42%)	46,226 (50%)	64,920 (47%)
Other	4,104 (9%)	13,716 (15%)	17,820 (13%)
Missing	16 (0%)	59 (0%)	75 (0%)
<b>Smoking status</b>			
Never	9,084 (20%)	57,951 (63%)	67,035 (49%)
Former	13,876 (31%)	13,553 (15%)	27,429 (20%)
Current	21,852 (49%)	20,958 (23%)	42,810 (31%)
Missing	41 (0%)	76 (0%)	117 (0%)
<b>Alcohol intake</b>			
Never	2,859 (6%)	24,582 (27%)	27,441 (20%)
Former	8,179 (18%)	11,160 (12%)	19,339 (14%)
Current	33,793 (75%)	56,763 (61%)	90,556 (66%)
Missing	22 (0%)	33 (0%)	55 (0%)
<b>Physical measures</b>			
SBP, mmHg	128.8 (15.9)	127.0 (17.2)	127.6 (16.8)
DBP, mmHg	84.4 (10.0)	82.5 (10.3)	83.1 (10.2)
BMI, kg/m <sup>2</sup>	27.9 (4.3)	29.6 (5.3)	29.0 (5.1)
Waist-to-hip Ratio	0.95 (0.07)	0.88 (0.07)	0.90 (0.08)
<b>Laboratory measurements</b>			
HDL-C, mmol/L	0.93 (0.19)	1.04 (0.22)	1.00 (0.21)
LDL-C, mmol/L	2.38 (0.79)	2.49 (0.79)	2.45 (0.79)
Triglycerides, mmol/L	1.64 (0.68)	1.53 (0.64)	1.57 (0.66)
HbA1c, %	6.10 (1.70)	6.10 (1.70)	6.10 (1.70)
eGFR, ml/min/1.73m <sup>2</sup> *	100.3 (16.4)	101.3 (16.6)	100.9 (16.5)
<b>Prior disease †</b>			
Coronary heart disease	937 (2%)	1,152 (1%)	2,089 (2%)
Stroke	547 (1%)	1,011 (1%)	1,558 (1%)
Cancer	311 (1%)	1,377 (1%)	1,688 (1%)
Diabetes ‡	8,599 (19%)	17,242 (19%)	25,841 (19%)
Other §	2,449 (5%)	9,128 (10%)	11,577 (8%)

Numbers are n (%) or mean (SD). SBP=systolic blood pressure, DBP=diastolic blood pressure, BMI=body mass index, HDL-C=high density lipoprotein cholesterol, LDL-C=low density lipoprotein cholesterol, HbA1c=glycosylated haemoglobin A1c

\* Calculated using the 2021 CKD-EPI equation, based on NMR-measured creatinine levels.

† Self-reported previous diagnoses unless otherwise stated.

‡ Self-reported previously-diagnosed diabetes or glycosylated haemoglobin ≥6.5%.

§ Other diseases include self-reported emphysema, chronic kidney disease, peptic ulcer, liver cirrhosis, and peripheral arterial disease.

**Webtable 4: Baseline characteristics of 133,207 participants aged 35-79 by fifth of PRS Tada *et al.***

Tada <i>et al</i> /PGS000011/ European/44 SNPs	Fifth of the PRS distribution					All n=133,207
	1 n=26,642 (20%)	2 n=26,641 (20%)	3 n=26,641 (20%)	4 n=26,641 (20%)	5 n=26,642 (20%)	
<b>Age, years</b>	51.3 (11.9)	51.3 (11.9)	51.2 (11.9)	51.2 (11.8)	51.2 (11.7)	51.2 (11.8)
<b>Resident of Coyoacán</b>	10,079 (38%)	10,295 (39%)	10,077 (38%)	10,257 (39%)	10,307 (39%)	51,015 (38%)
<b>Ancestry admixture percentage</b>						
Indigenous American	67.1 (17.5)	66.8 (17.9)	66.7 (18.0)	67.0 (18.0)	66.6 (17.8)	66.8 (17.9)
African	3.5 (3.0)	3.5 (2.9)	3.4 (2.8)	3.4 (2.7)	3.4 (2.7)	3.4 (2.8)
East Asian	1.4 (1.8)	1.4 (1.6)	1.4 (2.0)	1.4 (1.8)	1.4 (1.9)	1.4 (1.8)
European	27.9 (15.8)	28.4 (16.3)	28.4 (16.3)	28.2 (16.3)	28.6 (16.1)	28.3 (16.2)
<b>Highest attained educational level</b>						
University/high school	4,091 (15%)	4,164 (16%)	4,143 (16%)	4,183 (16%)	4,128 (16%)	20,709 (16%)
Middle school	6,695 (25%)	6,776 (25%)	6,560 (25%)	6,613 (25%)	6,788 (25%)	33,432 (25%)
Elementary	12,557 (47%)	12,444 (47%)	12,679 (48%)	12,668 (48%)	12,559 (47%)	62,907 (47%)
Other	3,282 (12%)	3,244 (12%)	3,244 (12%)	3,167 (12%)	3,154 (12%)	16,091 (12%)
Missing	17 (0%)	13 (0%)	15 (0%)	10 (0%)	13 (0%)	68 (0%)
<b>Smoking status</b>						
Never	12,874 (48%)	12,888 (48%)	12,929 (49%)	13,051 (49%)	12,849 (48%)	64,591 (48%)
Former	5,199 (20%)	5,156 (19%)	5,225 (20%)	5,213 (20%)	5,383 (20%)	26,176 (20%)
Current	8,545 (32%)	8,576 (32%)	8,462 (32%)	8,362 (31%)	8,385 (32%)	42,330 (32%)
Missing	24 (0%)	21 (0%)	25 (0%)	15 (0%)	25 (0%)	110 (0%)
<b>Alcohol intake</b>						
Never	5,082 (19%)	5,384 (20%)	5,245 (20%)	5,268 (20%)	5,124 (19%)	26,103 (20%)
Former	3,701 (14%)	3,571 (13%)	3,683 (14%)	3,605 (14%)	3,691 (14%)	18,251 (14%)
Current	17,847 (67%)	17,680 (66%)	17,699 (66%)	17,759 (67%)	17,818 (67%)	88,803 (67%)
Missing	12 (0%)	6 (0%)	14 (0%)	9 (0%)	9 (0%)	50 (0%)
<b>Physical measures</b>						
SBP, mmHg	127.0 (16.5)	127.1 (16.6)	127.3 (16.6)	127.2 (16.6)	127.6 (16.7)	127.2 (16.6)
DBP, mmHg	83.0 (10.2)	83.0 (10.1)	83.1 (10.1)	83.2 (10.2)	83.2 (10.3)	83.1 (10.2)
BMI, kg/m <sup>2</sup>	29.2 (5.1)	29.1 (5.1)	29.1 (5.1)	29.1 (5.0)	29.1 (5.0)	29.1 (5.1)
Waist-to-hip Ratio	0.90 (0.08)	0.90 (0.08)	0.90 (0.08)	0.90 (0.08)	0.90 (0.08)	0.90 (0.08)
<b>Laboratory measurements</b>						
HDL-C, mmol/L	1.00 (0.21)	1.00 (0.21)	1.00 (0.21)	1.00 (0.21)	1.00 (0.21)	1.00 (0.21)
LDL-C, mmol/L	2.45 (0.79)	2.47 (0.79)	2.46 (0.79)	2.46 (0.79)	2.45 (0.79)	2.46 (0.79)
Triglycerides, mmol/L	1.56 (0.65)	1.57 (0.65)	1.57 (0.66)	1.58 (0.66)	1.58 (0.66)	1.57 (0.66)
HbA1c, %	6.09 (1.70)	6.09 (1.70)	6.09 (1.71)	6.09 (1.70)	6.12 (1.75)	6.10 (1.71)
eGFR, ml/min/1.73m <sup>2</sup> *	101.7 (16.1)	101.6 (16.2)	101.7 (15.9)	101.6 (15.9)	101.6 (16.1)	101.7 (16.0)
<b>Prior disease †</b>						
Coronary heart disease	375 (1%)	380 (1%)	346 (1%)	386 (1%)	414 (2%)	1,901 (1%)
Stroke	249 (1%)	292 (1%)	295 (1%)	287 (1%)	291 (1%)	1,414 (1%)
Cancer	335 (1%)	318 (1%)	317 (1%)	315 (1%)	295 (1%)	1,580 (1%)
Diabetes ‡	4,955 (19%)	4,901 (18%)	4,900 (18%)	4,938 (19%)	5,102 (19%)	24,796 (19%)
Other §	2,197 (8%)	2,204 (8%)	2,166 (8%)	2,282 (9%)	2,264 (8%)	11,113 (8%)

Numbers are n (%) or mean (SD). SBP=systolic blood pressure, DBP=diastolic blood pressure, BMI=body mass index, HDL-C=high density lipoprotein cholesterol, LDL-C=low density lipoprotein cholesterol, HbA1c=glycosylated haemoglobin A1c

\* Calculated using the 2021 CKD-EPI equation, based on NMR-measured creatinine levels.

† Self-reported previous diagnoses unless otherwise stated.

‡ Self-reported previously-diagnosed diabetes or glycosylated haemoglobin ≥6.5%.

§ Other diseases include self-reported emphysema, chronic kidney disease, peptic ulcer, liver cirrhosis, and peripheral arterial disease.

**Webtable 5: Baseline characteristics of 133,207 participants aged 35-79 by fifth of PRS Oni-Orisan *et al.***

Oni-Orisan <i>et al</i> /PGS004595/ European/141 SNPs	Fifth of the PRS distribution					All n=133,207
	1 n=26,642 (20%)	2 n=26,641 (20%)	3 n=26,641 (20%)	4 n=26,641 (20%)	5 n=26,642 (20%)	
<b>Age, years</b>	51.3 (11.9)	51.3 (11.8)	51.2 (11.8)	51.1 (11.8)	51.3 (11.8)	51.2 (11.8)
<b>Resident of Coyoacán</b>	9,883 (37%)	10,000 (38%)	10,221 (38%)	10,280 (39%)	10,631 (40%)	51,015 (38%)
<b>Ancestry admixture percentage</b>						
Indigenous American	69.0 (17.5)	68.4 (17.8)	67.5 (17.8)	66.2 (17.9)	63.1 (17.7)	66.8 (17.9)
African	3.2 (2.6)	3.3 (2.7)	3.4 (2.8)	3.5 (2.9)	3.8 (3.0)	3.4 (2.8)
East Asian	1.4 (1.5)	1.4 (1.5)	1.4 (1.4)	1.4 (2.1)	1.5 (2.3)	1.4 (1.8)
European	26.4 (15.8)	26.9 (16.1)	27.7 (16.0)	28.8 (16.2)	31.6 (16.1)	28.3 (16.2)
<b>Highest attained educational level</b>						
University/high school	3,932 (15%)	4,007 (15%)	4,029 (15%)	4,224 (16%)	4,517 (17%)	20,709 (16%)
Middle school	6,629 (25%)	6,577 (25%)	6,696 (25%)	6,659 (25%)	6,871 (26%)	33,432 (25%)
Elementary	12,677 (48%)	12,718 (48%)	12,582 (47%)	12,651 (48%)	12,279 (46%)	62,907 (47%)
Other	3,391 (13%)	3,323 (12%)	3,320 (12%)	3,094 (12%)	2,963 (11%)	16,091 (12%)
Missing	13 (0%)	16 (0%)	14 (0%)	13 (0%)	12 (0%)	68 (0%)
<b>Smoking status</b>						
Never	13,096 (49%)	13,115 (49%)	13,046 (49%)	12,857 (48%)	12,477 (47%)	64,591 (48%)
Former	5,300 (20%)	5,223 (20%)	5,202 (20%)	5,164 (19%)	5,287 (20%)	26,176 (20%)
Current	8,232 (31%)	8,285 (31%)	8,368 (31%)	8,593 (32%)	8,852 (33%)	42,330 (32%)
Missing	14 (0%)	18 (0%)	25 (0%)	27 (0%)	26 (0%)	110 (0%)
<b>Alcohol intake</b>						
Never	5,202 (20%)	5,271 (20%)	5,261 (20%)	5,325 (20%)	5,044 (19%)	26,103 (20%)
Former	3,681 (14%)	3,747 (14%)	3,625 (14%)	3,563 (13%)	3,635 (14%)	18,251 (14%)
Current	17,745 (67%)	17,614 (66%)	17,744 (67%)	17,748 (67%)	17,952 (67%)	88,803 (67%)
Missing	14 (0%)	9 (0%)	11 (0%)	5 (0%)	11 (0%)	50 (0%)
<b>Physical measures</b>						
SBP, mmHg	126.6 (16.6)	127.0 (16.6)	127.4 (16.6)	127.3 (16.5)	127.8 (16.6)	127.2 (16.6)
DBP, mmHg	82.8 (10.2)	83.0 (10.1)	83.2 (10.3)	83.2 (10.2)	83.4 (10.2)	83.1 (10.2)
BMI, kg/m <sup>2</sup>	29.2 (5.1)	29.2 (5.1)	29.1 (5.1)	29.1 (5.1)	29.0 (5.0)	29.1 (5.1)
Waist-to-hip Ratio	0.90 (0.08)	0.90 (0.08)	0.90 (0.08)	0.90 (0.08)	0.90 (0.08)	0.90 (0.08)
<b>Laboratory measurements</b>						
HDL-C, mmol/L	1.00 (0.21)	1.00 (0.21)	1.00 (0.21)	1.00 (0.21)	1.00 (0.21)	1.00 (0.21)
LDL-C, mmol/L	2.43 (0.78)	2.45 (0.79)	2.45 (0.79)	2.47 (0.79)	2.49 (0.80)	2.46 (0.79)
Triglycerides, mmol/L	1.56 (0.65)	1.57 (0.66)	1.57 (0.66)	1.58 (0.66)	1.59 (0.67)	1.57 (0.66)
HbA1c, %	6.09 (1.69)	6.12 (1.73)	6.10 (1.72)	6.09 (1.72)	6.08 (1.70)	6.10 (1.71)
eGFR, ml/min/1.73m <sup>2</sup> *	101.9 (16.1)	101.8 (16.0)	101.6 (16.3)	101.6 (16.0)	101.4 (15.8)	101.7 (16.0)
<b>Prior disease †</b>						
Coronary heart disease	345 (1%)	306 (1%)	385 (1%)	396 (1%)	469 (2%)	1,901 (1%)
Stroke	259 (1%)	245 (1%)	322 (1%)	308 (1%)	280 (1%)	1,414 (1%)
Cancer	303 (1%)	326 (1%)	312 (1%)	320 (1%)	319 (1%)	1,580 (1%)
Diabetes ‡	4,903 (18%)	5,078 (19%)	5,027 (19%)	4,895 (18%)	4,893 (18%)	24,796 (19%)
Other §	2,202 (8%)	2,151 (8%)	2,309 (9%)	2,245 (8%)	2,206 (8%)	11,113 (8%)

Numbers are n (%) or mean (SD). SBP=systolic blood pressure, DBP=diastolic blood pressure, BMI=body mass index, HDL-C=high density lipoprotein cholesterol, LDL-C=low density lipoprotein cholesterol, HbA1c=glycosylated haemoglobin A1c

\* Calculated using the 2021 CKD-EPI equation, based on NMR-measured creatinine levels.

† Self-reported previous diagnoses unless otherwise stated.

‡ Self-reported previously-diagnosed diabetes or glycosylated haemoglobin ≥6.5%.

§ Other diseases include self-reported emphysema, chronic kidney disease, peptic ulcer, liver cirrhosis, and peripheral arterial disease.

**Webtable 6: Baseline characteristics of 133,207 participants aged 35-79 by fifth of PRS Koyama *et al.***

Koyama <i>et al</i> /PGS000337/ Japanese and European/64,185 SNPs	Fifth of the PRS distribution					All n=133,207
	1 n=26,642 (20%)	2 n=26,641 (20%)	3 n=26,641 (20%)	4 n=26,641 (20%)	5 n=26,642 (20%)	
<b>Age, years</b>	51.7 (12.0)	51.4 (11.9)	51.2 (11.8)	51.0 (11.8)	50.9 (11.6)	51.2 (11.8)
<b>Resident of Coyoacán</b>	10,764 (40%)	10,244 (38%)	10,137 (38%)	10,027 (38%)	9,843 (37%)	51,015 (38%)
<b>Ancestry admixture percentage</b>						
Indigenous American	62.6 (18.2)	65.9 (17.8)	67.4 (17.7)	68.6 (17.5)	69.7 (17.3)	66.8 (17.9)
African	3.7 (2.7)	3.5 (2.8)	3.4 (2.7)	3.3 (2.8)	3.3 (3.0)	3.4 (2.8)
East Asian	1.4 (1.7)	1.4 (1.6)	1.4 (1.9)	1.4 (1.7)	1.4 (2.1)	1.4 (1.8)
European	32.3 (16.7)	29.2 (16.2)	27.7 (16.0)	26.6 (15.7)	25.6 (15.4)	28.3 (16.2)
<b>Highest attained educational level</b>						
University/high school	4,846 (18%)	4,238 (16%)	4,102 (15%)	3,910 (15%)	3,613 (14%)	20,709 (16%)
Middle school	6,753 (25%)	6,774 (25%)	6,733 (25%)	6,641 (25%)	6,531 (25%)	33,432 (25%)
Elementary	12,110 (45%)	12,472 (47%)	12,567 (47%)	12,775 (48%)	12,983 (49%)	62,907 (47%)
Other	2,921 (11%)	3,146 (12%)	3,225 (12%)	3,296 (12%)	3,503 (13%)	16,091 (12%)
Missing	12 (0%)	11 (0%)	14 (0%)	19 (0%)	12 (0%)	68 (0%)
<b>Smoking status</b>						
Never	12,947 (49%)	13,096 (49%)	12,831 (48%)	12,915 (49%)	12,802 (48%)	64,591 (48%)
Former	5,258 (20%)	5,191 (20%)	5,356 (20%)	5,162 (19%)	5,209 (20%)	26,176 (20%)
Current	8,419 (32%)	8,332 (31%)	8,429 (32%)	8,539 (32%)	8,611 (32%)	42,330 (32%)
Missing	18 (0%)	22 (0%)	25 (0%)	25 (0%)	20 (0%)	110 (0%)
<b>Alcohol intake</b>						
Never	5,023 (19%)	5,300 (20%)	5,166 (19%)	5,293 (20%)	5,321 (20%)	26,103 (20%)
Former	3,495 (13%)	3,583 (13%)	3,590 (13%)	3,732 (14%)	3,851 (14%)	18,251 (14%)
Current	18,115 (68%)	17,746 (67%)	17,876 (67%)	17,608 (66%)	17,458 (66%)	88,803 (67%)
Missing	9 (0%)	12 (0%)	9 (0%)	8 (0%)	12 (0%)	50 (0%)
<b>Physical measures</b>						
SBP, mmHg	126.2 (16.2)	126.9 (16.6)	127.3 (16.5)	127.6 (16.8)	128.2 (16.9)	127.2 (16.6)
DBP, mmHg	82.5 (10.0)	82.9 (10.2)	83.1 (10.2)	83.3 (10.2)	83.6 (10.3)	83.1 (10.2)
BMI, kg/m <sup>2</sup>	29.0 (5.1)	29.1 (5.1)	29.1 (5.0)	29.2 (5.1)	29.2 (5.1)	29.1 (5.1)
Waist-to-hip Ratio	0.90 (0.08)	0.90 (0.08)	0.90 (0.08)	0.90 (0.08)	0.90 (0.08)	0.90 (0.08)
<b>Laboratory measurements</b>						
HDL-C, mmol/L	1.01 (0.22)	1.01 (0.21)	1.00 (0.21)	1.00 (0.21)	0.99 (0.21)	1.00 (0.21)
LDL-C, mmol/L	2.45 (0.78)	2.45 (0.78)	2.46 (0.79)	2.46 (0.80)	2.46 (0.80)	2.46 (0.79)
Triglycerides, mmol/L	1.52 (0.63)	1.56 (0.65)	1.58 (0.66)	1.59 (0.66)	1.62 (0.68)	1.57 (0.66)
HbA1c, %	5.98 (1.58)	6.06 (1.66)	6.10 (1.72)	6.13 (1.75)	6.22 (1.83)	6.10 (1.71)
eGFR, ml/min/1.73m <sup>2</sup> *	101.2 (15.9)	101.5 (16.0)	101.7 (16.1)	101.9 (16.1)	102.0 (16.0)	101.7 (16.0)
<b>Prior disease †</b>						
Coronary heart disease	325 (1%)	330 (1%)	357 (1%)	396 (1%)	493 (2%)	1,901 (1%)
Stroke	252 (1%)	279 (1%)	284 (1%)	263 (1%)	336 (1%)	1,414 (1%)
Cancer	336 (1%)	357 (1%)	285 (1%)	318 (1%)	284 (1%)	1,580 (1%)
Diabetes ‡	4,208 (16%)	4,731 (18%)	4,980 (19%)	5,164 (19%)	5,713 (21%)	24,796 (19%)
Other §	2,392 (9%)	2,242 (8%)	2,237 (8%)	2,151 (8%)	2,091 (8%)	11,113 (8%)

Numbers are n (%) or mean (SD). SBP=systolic blood pressure, DBP=diastolic blood pressure, BMI=body mass index, HDL-C=high density lipoprotein cholesterol, LDL-C=low density lipoprotein cholesterol, HbA1c=glycosylated haemoglobin A1c

\* Calculated using the 2021 CKD-EPI equation, based on NMR-measured creatinine levels.

† Self-reported previous diagnoses unless otherwise stated.

‡ Self-reported previously-diagnosed diabetes or glycosylated haemoglobin ≥6.5%.

§ Other diseases include self-reported emphysema, chronic kidney disease, peptic ulcer, liver cirrhosis, and peripheral arterial disease.

**Webtable 7: Baseline characteristics of 133,207 participants aged 35-79 by fifth of PRS Tcheandjieu *et al.***

Tcheandjieu <i>et al</i> /PGS003446/ Multi-ancestry/485,464 SNPs	Fifth of the PRS distribution					All n=133,207
	1 n=26,642 (20%)	2 n=26,641 (20%)	3 n=26,641 (20%)	4 n=26,641 (20%)	5 n=26,642 (20%)	
<b>Age, years</b>	51.0 (11.8)	51.0 (11.8)	51.0 (11.8)	51.3 (11.8)	51.9 (12.0)	51.2 (11.8)
<b>Resident of Coyoacán</b>	8,908 (33%)	9,590 (36%)	10,094 (38%)	10,650 (40%)	11,773 (44%)	51,015 (38%)
<b>Ancestry admixture percentage</b>						
Indigenous American	80.2 (14.4)	73.0 (15.4)	67.0 (15.5)	61.3 (15.2)	52.7 (15.4)	66.8 (17.9)
African	2.4 (2.9)	3.0 (2.8)	3.5 (2.6)	3.9 (2.6)	4.4 (2.6)	3.4 (2.8)
East Asian	1.3 (2.4)	1.4 (1.9)	1.5 (2.0)	1.5 (1.3)	1.5 (1.3)	1.4 (1.8)
European	16.1 (12.2)	22.6 (13.5)	28.0 (13.8)	33.4 (13.9)	41.3 (14.8)	28.3 (16.2)
<b>Highest attained educational level</b>						
University/high school	3,238 (12%)	3,697 (14%)	4,117 (15%)	4,400 (17%)	5,257 (20%)	20,709 (16%)
Middle school	6,051 (23%)	6,469 (24%)	6,823 (26%)	7,013 (26%)	7,076 (27%)	33,432 (25%)
Elementary	13,386 (50%)	13,054 (49%)	12,564 (47%)	12,299 (46%)	11,604 (44%)	62,907 (47%)
Other	3,951 (15%)	3,411 (13%)	3,121 (12%)	2,915 (11%)	2,693 (10%)	16,091 (12%)
Missing	16 (0%)	10 (0%)	16 (0%)	14 (0%)	12 (0%)	68 (0%)
<b>Smoking status</b>						
Never	14,516 (55%)	13,488 (51%)	12,956 (49%)	12,215 (46%)	11,416 (43%)	64,591 (48%)
Former	5,093 (19%)	5,151 (19%)	5,305 (20%)	5,260 (20%)	5,367 (20%)	26,176 (20%)
Current	7,011 (26%)	7,984 (30%)	8,359 (31%)	9,145 (34%)	9,831 (37%)	42,330 (32%)
Missing	22 (0%)	18 (0%)	21 (0%)	21 (0%)	28 (0%)	110 (0%)
<b>Alcohol intake</b>						
Never	5,649 (21%)	5,233 (20%)	5,163 (19%)	5,127 (19%)	4,931 (19%)	26,103 (20%)
Former	3,658 (14%)	3,712 (14%)	3,668 (14%)	3,548 (13%)	3,665 (14%)	18,251 (14%)
Current	17,330 (65%)	17,685 (66%)	17,799 (67%)	17,955 (67%)	18,034 (68%)	88,803 (67%)
Missing	5 (0%)	11 (0%)	11 (0%)	11 (0%)	12 (0%)	50 (0%)
<b>Physical measures</b>						
SBP, mmHg	126.2 (16.2)	126.8 (16.4)	127.3 (16.6)	127.6 (16.7)	128.3 (17.0)	127.2 (16.6)
DBP, mmHg	82.5 (9.9)	82.9 (10.1)	83.2 (10.2)	83.3 (10.3)	83.6 (10.4)	83.1 (10.2)
BMI, kg/m <sup>2</sup>	29.0 (4.9)	29.1 (5.0)	29.2 (5.0)	29.2 (5.1)	29.1 (5.3)	29.1 (5.1)
Waist-to-hip Ratio	0.90 (0.07)	0.90 (0.08)	0.90 (0.08)	0.90 (0.08)	0.90 (0.08)	0.90 (0.08)
<b>Laboratory measurements</b>						
HDL-C, mmol/L	1.00 (0.21)	1.00 (0.21)	1.00 (0.21)	1.00 (0.21)	1.00 (0.22)	1.00 (0.21)
LDL-C, mmol/L	2.39 (0.77)	2.43 (0.78)	2.45 (0.78)	2.48 (0.78)	2.53 (0.82)	2.46 (0.79)
Triglycerides, mmol/L	1.57 (0.64)	1.57 (0.66)	1.58 (0.66)	1.57 (0.65)	1.58 (0.67)	1.57 (0.66)
HbA1c, %	6.16 (1.77)	6.12 (1.72)	6.10 (1.71)	6.08 (1.71)	6.04 (1.66)	6.10 (1.71)
eGFR, ml/min/1.73m <sup>2</sup> *	102.9 (15.6)	102.4 (15.9)	101.8 (16.0)	101.2 (16.1)	99.9 (16.4)	101.7 (16.0)
<b>Prior disease †</b>						
Coronary heart disease	249 (1%)	275 (1%)	355 (1%)	450 (2%)	572 (2%)	1,901 (1%)
Stroke	267 (1%)	289 (1%)	269 (1%)	276 (1%)	313 (1%)	1,414 (1%)
Cancer	278 (1%)	295 (1%)	282 (1%)	335 (1%)	390 (1%)	1,580 (1%)
Diabetes ‡	5,066 (19%)	5,053 (19%)	5,033 (19%)	4,816 (18%)	4,828 (18%)	24,796 (19%)
Other §	1,880 (7%)	2,106 (8%)	2,180 (8%)	2,346 (9%)	2,601 (10%)	11,113 (8%)

Numbers are n (%) or mean (SD). SBP=systolic blood pressure, DBP=diastolic blood pressure, BMI=body mass index, HDL-C=high density lipoprotein cholesterol, LDL-C=low density lipoprotein cholesterol, HbA1c=glycosylated haemoglobin A1c

\* Calculated using the 2021 CKD-EPI equation, based on NMR-measured creatinine levels.

† Self-reported previous diagnoses unless otherwise stated.

‡ Self-reported previously-diagnosed diabetes or glycosylated haemoglobin ≥6.5%.

§ Other diseases include self-reported emphysema, chronic kidney disease, peptic ulcer, liver cirrhosis, and peripheral arterial disease.



**Webtable 8: Baseline characteristics of 133,207 participants aged 35-79 by fifth of PRS Tamlander *et al.***

Tamlander <i>et al.</i> PGS001780/ European/1,087,958 SNPs	Fifth of the PRS distribution					All n=133,207
	1 n=26,642 (20%)	2 n=26,641 (20%)	3 n=26,641 (20%)	4 n=26,641 (20%)	5 n=26,642 (20%)	
<b>Age, years</b>	52.0 (12.0)	51.4 (11.9)	51.0 (11.8)	51.0 (11.8)	50.7 (11.7)	51.2 (11.8)
<b>Resident of Coyoacán</b>	11,363 (43%)	10,657 (40%)	10,099 (38%)	9,634 (36%)	9,262 (35%)	51,015 (38%)
<b>Ancestry admixture percentage</b>						
Indigenous American	56.7 (16.9)	63.7 (17.0)	67.6 (17.0)	71.1 (16.8)	75.1 (15.9)	66.8 (17.9)
African	4.3 (3.1)	3.8 (2.8)	3.4 (2.7)	3.1 (2.6)	2.6 (2.4)	3.4 (2.8)
East Asian	1.5 (1.5)	1.4 (1.7)	1.4 (1.8)	1.4 (2.0)	1.4 (2.1)	1.4 (1.8)
European	37.5 (15.8)	31.1 (15.5)	27.5 (15.3)	24.5 (14.9)	20.9 (14.1)	28.3 (16.2)
<b>Highest attained educational level</b>						
University/high school	5,318 (20%)	4,523 (17%)	4,002 (15%)	3,605 (14%)	3,261 (12%)	20,709 (16%)
Middle school	7,075 (27%)	6,861 (26%)	6,787 (25%)	6,478 (24%)	6,231 (23%)	33,432 (25%)
Elementary	11,578 (43%)	12,270 (46%)	12,655 (48%)	13,087 (49%)	13,317 (50%)	62,907 (47%)
Other	2,654 (10%)	2,975 (11%)	3,190 (12%)	3,459 (13%)	3,813 (14%)	16,091 (12%)
Missing	17 (0%)	12 (0%)	7 (0%)	12 (0%)	20 (0%)	68 (0%)
<b>Smoking status</b>						
Never	12,389 (47%)	12,766 (48%)	12,950 (49%)	13,056 (49%)	13,430 (50%)	64,591 (48%)
Former	5,382 (20%)	5,189 (19%)	5,207 (20%)	5,305 (20%)	5,093 (19%)	26,176 (20%)
Current	8,846 (33%)	8,661 (33%)	8,464 (32%)	8,259 (31%)	8,100 (30%)	42,330 (32%)
Missing	25 (0%)	25 (0%)	20 (0%)	21 (0%)	19 (0%)	110 (0%)
<b>Alcohol intake</b>						
Never	4,887 (18%)	5,091 (19%)	5,212 (20%)	5,389 (20%)	5,524 (21%)	26,103 (20%)
Former	3,494 (13%)	3,527 (13%)	3,621 (14%)	3,769 (14%)	3,840 (14%)	18,251 (14%)
Current	18,249 (69%)	18,012 (68%)	17,800 (67%)	17,477 (66%)	17,265 (65%)	88,803 (67%)
Missing	12 (0%)	11 (0%)	8 (0%)	6 (0%)	13 (0%)	50 (0%)
<b>Physical measures</b>						
SBP, mmHg	126.7 (16.4)	127.1 (16.4)	127.0 (16.6)	127.6 (16.7)	127.9 (16.8)	127.2 (16.6)
DBP, mmHg	82.9 (10.1)	83.0 (10.2)	83.0 (10.2)	83.3 (10.2)	83.4 (10.2)	83.1 (10.2)
BMI, kg/m <sup>2</sup>	29.0 (5.2)	29.1 (5.1)	29.1 (5.1)	29.2 (5.0)	29.2 (5.0)	29.1 (5.1)
Waist-to-hip Ratio	0.90 (0.08)	0.90 (0.08)	0.90 (0.08)	0.90 (0.08)	0.91 (0.07)	0.90 (0.08)
<b>Laboratory measurements</b>						
HDL-C, mmol/L	1.01 (0.22)	1.00 (0.21)	1.00 (0.21)	1.00 (0.21)	0.99 (0.21)	1.00 (0.21)
LDL-C, mmol/L	2.47 (0.78)	2.47 (0.78)	2.46 (0.79)	2.45 (0.80)	2.45 (0.80)	2.46 (0.79)
Triglycerides, mmol/L	1.53 (0.64)	1.56 (0.65)	1.57 (0.66)	1.59 (0.66)	1.63 (0.68)	1.57 (0.66)
HbA1c, %	5.95 (1.55)	6.03 (1.63)	6.10 (1.72)	6.15 (1.76)	6.26 (1.87)	6.10 (1.71)
eGFR, ml/min/1.73m <sup>2</sup> *	100.5 (16.0)	101.4 (16.0)	101.8 (16.0)	102.1 (16.1)	102.4 (16.0)	101.7 (16.0)
<b>Prior disease †</b>						
Coronary heart disease	379 (1%)	367 (1%)	357 (1%)	384 (1%)	414 (2%)	1,901 (1%)
Stroke	255 (1%)	279 (1%)	300 (1%)	278 (1%)	302 (1%)	1,414 (1%)
Cancer	367 (1%)	329 (1%)	301 (1%)	308 (1%)	275 (1%)	1,580 (1%)
Diabetes ‡	4,096 (15%)	4,624 (17%)	4,952 (19%)	5,287 (20%)	5,837 (22%)	24,796 (19%)
Other §	2,504 (9%)	2,352 (9%)	2,233 (8%)	2,135 (8%)	1,889 (7%)	11,113 (8%)

Numbers are n (%) or mean (SD). SBP=systolic blood pressure, DBP=diastolic blood pressure, BMI=body mass index, HDL-C=high density lipoprotein cholesterol, LDL-C=low density lipoprotein cholesterol, HbA1c=glycosylated haemoglobin A1c

\* Calculated using the 2021 CKD-EPI equation, based on NMR-measured creatinine levels.

† Self-reported previous diagnoses unless otherwise stated.

‡ Self-reported previously-diagnosed diabetes or glycosylated haemoglobin ≥6.5%.

§ Other diseases include self-reported emphysema, chronic kidney disease, peptic ulcer, liver cirrhosis, and peripheral arterial disease.

**Webtable 9: Baseline characteristics of 133,207 participants aged 35-79 by fifth of PRS Patel *et al.***

Patel <i>et al</i> /PGS003725/ Multi-ancestry/1,273,824 SNPs	Fifth of the PRS distribution					All n=133,207
	1 n=26,642 (20%)	2 n=26,641 (20%)	3 n=26,641 (20%)	4 n=26,641 (20%)	5 n=26,642 (20%)	
<b>Age, years</b>	51.5 (12.0)	51.4 (11.9)	51.3 (11.9)	51.1 (11.7)	50.9 (11.6)	51.2 (11.8)
<b>Resident of Coyoacán</b>	9,980 (37%)	10,079 (38%)	10,204 (38%)	10,162 (38%)	10,590 (40%)	51,015 (38%)
<b>Ancestry admixture percentage</b>						
Indigenous American	70.4 (17.7)	68.8 (17.7)	67.5 (17.7)	65.6 (17.7)	62.0 (17.4)	66.8 (17.9)
African	2.9 (2.3)	3.2 (2.5)	3.4 (2.7)	3.6 (2.8)	4.1 (3.4)	3.4 (2.8)
East Asian	1.3 (1.5)	1.4 (1.7)	1.4 (1.9)	1.4 (1.7)	1.5 (2.3)	1.4 (1.8)
European	25.4 (16.0)	26.7 (16.1)	27.7 (16.0)	29.4 (16.0)	32.3 (15.9)	28.3 (16.2)
<b>Highest attained educational level</b>						
University/high school	4,224 (16%)	4,076 (15%)	4,110 (15%)	4,080 (15%)	4,219 (16%)	20,709 (16%)
Middle school	6,441 (24%)	6,761 (25%)	6,658 (25%)	6,691 (25%)	6,881 (26%)	33,432 (25%)
Elementary	12,709 (48%)	12,498 (47%)	12,576 (47%)	12,642 (47%)	12,482 (47%)	62,907 (47%)
Other	3,256 (12%)	3,292 (12%)	3,278 (12%)	3,218 (12%)	3,047 (11%)	16,091 (12%)
Missing	12 (0%)	14 (0%)	19 (0%)	10 (0%)	13 (0%)	68 (0%)
<b>Smoking status</b>						
Never	13,720 (52%)	13,227 (50%)	12,869 (48%)	12,634 (47%)	12,141 (46%)	64,591 (48%)
Former	5,166 (19%)	5,245 (20%)	5,302 (20%)	5,224 (20%)	5,239 (20%)	26,176 (20%)
Current	7,732 (29%)	8,149 (31%)	8,450 (32%)	8,758 (33%)	9,241 (35%)	42,330 (32%)
Missing	24 (0%)	20 (0%)	20 (0%)	25 (0%)	21 (0%)	110 (0%)
<b>Alcohol intake</b>						
Never	5,127 (19%)	5,196 (20%)	5,336 (20%)	5,331 (20%)	5,113 (19%)	26,103 (20%)
Former	3,616 (14%)	3,599 (14%)	3,608 (14%)	3,688 (14%)	3,740 (14%)	18,251 (14%)
Current	17,890 (67%)	17,834 (67%)	17,690 (66%)	17,611 (66%)	17,778 (67%)	88,803 (67%)
Missing	9 (0%)	12 (0%)	7 (0%)	11 (0%)	11 (0%)	50 (0%)
<b>Physical measures</b>						
SBP, mmHg	125.8 (16.1)	126.6 (16.4)	127.2 (16.4)	127.9 (16.9)	128.6 (17.0)	127.2 (16.6)
DBP, mmHg	82.3 (10.1)	82.7 (10.1)	83.2 (10.1)	83.4 (10.3)	83.9 (10.4)	83.1 (10.2)
BMI, kg/m <sup>2</sup>	28.9 (5.0)	29.1 (5.0)	29.1 (5.1)	29.2 (5.1)	29.3 (5.2)	29.1 (5.1)
Waist-to-hip Ratio	0.90 (0.08)	0.90 (0.08)	0.90 (0.08)	0.90 (0.08)	0.90 (0.08)	0.90 (0.08)
<b>Laboratory measurements</b>						
HDL-C, mmol/L	1.01 (0.22)	1.01 (0.21)	1.00 (0.21)	1.00 (0.21)	0.99 (0.21)	1.00 (0.21)
LDL-C, mmol/L	2.40 (0.76)	2.44 (0.78)	2.46 (0.79)	2.48 (0.80)	2.51 (0.82)	2.46 (0.79)
Triglycerides, mmol/L	1.50 (0.61)	1.55 (0.64)	1.58 (0.66)	1.60 (0.68)	1.63 (0.70)	1.57 (0.66)
HbA1c, %	5.98 (1.58)	6.05 (1.64)	6.09 (1.69)	6.16 (1.78)	6.22 (1.84)	6.10 (1.71)
eGFR, ml/min/1.73m <sup>2</sup> *	102.0 (15.7)	101.9 (15.8)	101.5 (16.2)	101.6 (16.1)	101.3 (16.4)	101.7 (16.0)
<b>Prior disease †</b>						
Coronary heart disease	285 (1%)	324 (1%)	332 (1%)	389 (1%)	571 (2%)	1,901 (1%)
Stroke	233 (1%)	259 (1%)	310 (1%)	280 (1%)	332 (1%)	1,414 (1%)
Cancer	312 (1%)	321 (1%)	316 (1%)	319 (1%)	312 (1%)	1,580 (1%)
Diabetes ‡	4,195 (16%)	4,583 (17%)	4,922 (18%)	5,353 (20%)	5,743 (22%)	24,796 (19%)
Other §	2,253 (8%)	2,208 (8%)	2,193 (8%)	2,269 (9%)	2,190 (8%)	11,113 (8%)

Numbers are n (%) or mean (SD). SBP=systolic blood pressure, DBP=diastolic blood pressure, BMI=body mass index, HDL-C=high density lipoprotein cholesterol, LDL-C=low density lipoprotein cholesterol, HbA1c=glycosylated haemoglobin A1c

\* Calculated using the 2021 CKD-EPI equation, based on NMR-measured creatinine levels.

† Self-reported previous diagnoses unless otherwise stated.

‡ Self-reported previously-diagnosed diabetes or glycosylated haemoglobin ≥6.5%.

§ Other diseases include self-reported emphysema, chronic kidney disease, peptic ulcer, liver cirrhosis, and peripheral arterial disease.

**Webtable 10: Baseline characteristics of 133,207 participants aged 35-79 by fifth of PRS Inouye *et al.***

Inouye <i>et al</i> /PGS000018/ European/1,720,068 SNPs	Fifth of the PRS distribution					All n=133,207
	1 n=26,642 (20%)	2 n=26,641 (20%)	3 n=26,641 (20%)	4 n=26,641 (20%)	5 n=26,642 (20%)	
<b>Age, years</b>	52.4 (12.1)	51.4 (11.8)	51.0 (11.8)	50.8 (11.8)	50.7 (11.7)	51.2 (11.8)
<b>Resident of Coyoacán</b>	11,967 (45%)	10,593 (40%)	10,046 (38%)	9,484 (36%)	8,925 (33%)	51,015 (38%)
<b>Ancestry admixture percentage</b>						
Indigenous American	51.8 (15.1)	61.7 (15.2)	67.8 (15.6)	73.3 (15.3)	79.6 (14.3)	66.8 (17.9)
African	4.6 (2.8)	4.0 (2.8)	3.5 (2.8)	2.9 (2.6)	2.3 (2.3)	3.4 (2.8)
East Asian	1.5 (1.5)	1.5 (1.6)	1.5 (1.9)	1.4 (1.8)	1.3 (2.2)	1.4 (1.8)
European	42.1 (14.4)	32.8 (13.8)	27.3 (13.9)	22.4 (13.5)	16.9 (12.4)	28.3 (16.2)
<b>Highest attained educational level</b>						
University/high school	5,825 (22%)	4,492 (17%)	4,008 (15%)	3,480 (13%)	2,904 (11%)	20,709 (16%)
Middle school	7,149 (27%)	7,077 (27%)	6,792 (26%)	6,366 (24%)	6,048 (23%)	33,432 (25%)
Elementary	11,220 (42%)	12,188 (46%)	12,757 (48%)	13,209 (50%)	13,533 (51%)	62,907 (47%)
Other	2,440 (9%)	2,872 (11%)	3,072 (12%)	3,568 (13%)	4,139 (16%)	16,091 (12%)
Missing	8 (0%)	12 (0%)	12 (0%)	18 (0%)	18 (0%)	68 (0%)
<b>Smoking status</b>						
Never	11,982 (45%)	12,541 (47%)	12,966 (49%)	13,351 (50%)	13,751 (52%)	64,591 (48%)
Former	5,364 (20%)	5,314 (20%)	5,198 (20%)	5,200 (20%)	5,100 (19%)	26,176 (20%)
Current	9,268 (35%)	8,771 (33%)	8,454 (32%)	8,067 (30%)	7,770 (29%)	42,330 (32%)
Missing	28 (0%)	15 (0%)	23 (0%)	23 (0%)	21 (0%)	110 (0%)
<b>Alcohol intake</b>						
Never	4,730 (18%)	5,224 (20%)	5,215 (20%)	5,404 (20%)	5,530 (21%)	26,103 (20%)
Former	3,379 (13%)	3,567 (13%)	3,661 (14%)	3,708 (14%)	3,936 (15%)	18,251 (14%)
Current	18,520 (70%)	17,840 (67%)	17,757 (67%)	17,519 (66%)	17,167 (64%)	88,803 (67%)
Missing	13 (0%)	10 (0%)	8 (0%)	10 (0%)	9 (0%)	50 (0%)
<b>Physical measures</b>						
SBP, mmHg	126.9 (16.5)	127.1 (16.4)	127.0 (16.6)	127.5 (16.8)	127.7 (16.7)	127.2 (16.6)
DBP, mmHg	83.0 (10.1)	83.1 (10.2)	83.1 (10.2)	83.2 (10.2)	83.3 (10.2)	83.1 (10.2)
BMI, kg/m <sup>2</sup>	28.9 (5.2)	29.1 (5.1)	29.1 (5.1)	29.2 (5.0)	29.2 (4.9)	29.1 (5.1)
Waist-to-hip Ratio	0.90 (0.08)	0.90 (0.08)	0.90 (0.08)	0.90 (0.08)	0.91 (0.07)	0.90 (0.08)
<b>Laboratory measurements</b>						
HDL-C, mmol/L	1.01 (0.22)	1.00 (0.21)	1.00 (0.21)	1.00 (0.21)	0.99 (0.21)	1.00 (0.21)
LDL-C, mmol/L	2.50 (0.78)	2.48 (0.80)	2.45 (0.79)	2.44 (0.78)	2.42 (0.79)	2.46 (0.79)
Triglycerides, mmol/L	1.52 (0.63)	1.56 (0.66)	1.57 (0.66)	1.60 (0.67)	1.62 (0.67)	1.57 (0.66)
HbA1c, %	5.90 (1.48)	6.04 (1.66)	6.10 (1.72)	6.16 (1.76)	6.28 (1.89)	6.10 (1.71)
eGFR, ml/min/1.73m <sup>2</sup> *	99.8 (16.1)	101.2 (16.0)	102.0 (15.9)	102.3 (16.1)	103.0 (15.9)	101.7 (16.0)
<b>Prior disease †</b>						
Coronary heart disease	432 (2%)	382 (1%)	364 (1%)	332 (1%)	391 (1%)	1,901 (1%)
Stroke	255 (1%)	267 (1%)	298 (1%)	285 (1%)	309 (1%)	1,414 (1%)
Cancer	384 (1%)	348 (1%)	318 (1%)	263 (1%)	267 (1%)	1,580 (1%)
Diabetes ‡	3,898 (15%)	4,589 (17%)	4,959 (19%)	5,418 (20%)	5,932 (22%)	24,796 (19%)
Other §	2,664 (10%)	2,319 (9%)	2,231 (8%)	2,029 (8%)	1,870 (7%)	11,113 (8%)

Numbers are n (%) or mean (SD). SBP=systolic blood pressure, DBP=diastolic blood pressure, BMI=body mass index, HDL-C=high density lipoprotein cholesterol, LDL-C=low density lipoprotein cholesterol, HbA1c=glycosylated haemoglobin A1c

\* Calculated using the 2021 CKD-EPI equation, based on NMR-measured creatinine levels.

† Self-reported previous diagnoses unless otherwise stated.

‡ Self-reported previously-diagnosed diabetes or glycosylated haemoglobin ≥6.5%.

§ Other diseases include self-reported emphysema, chronic kidney disease, peptic ulcer, liver cirrhosis, and peripheral arterial disease.

**Webtable 11: Baseline characteristics of 133,207 participants aged 35-79 by fifth of PRS Khera *et al.***

Khera <i>et al</i> /PGS000013/ European/6,472,620 SNPs	Fifth of the PRS distribution					All n=133,207
	1 n=26,642 (20%)	2 n=26,641 (20%)	3 n=26,641 (20%)	4 n=26,641 (20%)	5 n=26,642 (20%)	
<b>Age, years</b>	51.4 (11.9)	51.2 (11.8)	51.3 (11.8)	51.1 (11.8)	51.2 (11.8)	51.2 (11.8)
<b>Resident of Coyoacán</b>	10,270 (39%)	10,129 (38%)	10,096 (38%)	10,227 (38%)	10,293 (39%)	51,015 (38%)
<b>Ancestry admixture percentage</b>						
Indigenous American	66.1 (17.7)	67.9 (17.9)	67.9 (17.8)	67.2 (17.9)	65.1 (17.8)	66.8 (17.9)
African	3.7 (3.4)	3.3 (2.7)	3.3 (2.6)	3.4 (2.6)	3.5 (2.6)	3.4 (2.8)
East Asian	1.4 (1.4)	1.4 (1.6)	1.4 (1.6)	1.4 (1.9)	1.5 (2.4)	1.4 (1.8)
European	28.7 (16.0)	27.4 (16.2)	27.4 (16.1)	28.0 (16.2)	29.9 (16.2)	28.3 (16.2)
<b>Highest attained educational level</b>						
University/high school	4,272 (16%)	4,068 (15%)	4,091 (15%)	4,108 (15%)	4,170 (16%)	20,709 (16%)
Middle school	6,707 (25%)	6,746 (25%)	6,642 (25%)	6,683 (25%)	6,654 (25%)	33,432 (25%)
Elementary	12,395 (47%)	12,676 (48%)	12,604 (47%)	12,657 (48%)	12,575 (47%)	62,907 (47%)
Other	3,251 (12%)	3,143 (12%)	3,291 (12%)	3,176 (12%)	3,230 (12%)	16,091 (12%)
Missing	17 (0%)	8 (0%)	13 (0%)	17 (0%)	13 (0%)	68 (0%)
<b>Smoking status</b>						
Never	13,064 (49%)	13,057 (49%)	13,048 (49%)	12,703 (48%)	12,719 (48%)	64,591 (48%)
Former	5,294 (20%)	5,132 (19%)	5,187 (19%)	5,256 (20%)	5,307 (20%)	26,176 (20%)
Current	8,264 (31%)	8,437 (32%)	8,382 (31%)	8,654 (33%)	8,593 (32%)	42,330 (32%)
Missing	20 (0%)	15 (0%)	24 (0%)	28 (0%)	23 (0%)	110 (0%)
<b>Alcohol intake</b>						
Never	5,175 (19%)	5,122 (19%)	5,258 (20%)	5,300 (20%)	5,248 (20%)	26,103 (20%)
Former	3,641 (14%)	3,617 (14%)	3,635 (14%)	3,659 (14%)	3,699 (14%)	18,251 (14%)
Current	17,815 (67%)	17,896 (67%)	17,737 (67%)	17,670 (66%)	17,685 (66%)	88,803 (67%)
Missing	11 (0%)	6 (0%)	11 (0%)	12 (0%)	10 (0%)	50 (0%)
<b>Physical measures</b>						
SBP, mmHg	126.7 (16.6)	126.9 (16.3)	127.3 (16.6)	127.3 (16.7)	128.0 (16.8)	127.2 (16.6)
DBP, mmHg	82.9 (10.1)	83.0 (10.2)	83.1 (10.2)	83.2 (10.2)	83.4 (10.3)	83.1 (10.2)
BMI, kg/m <sup>2</sup>	29.2 (5.2)	29.1 (5.0)	29.1 (5.0)	29.1 (5.1)	29.0 (5.1)	29.1 (5.1)
Waist-to-hip Ratio	0.90 (0.08)	0.90 (0.08)	0.90 (0.08)	0.90 (0.08)	0.90 (0.08)	0.90 (0.08)
<b>Laboratory measurements</b>						
HDL-C, mmol/L	1.00 (0.21)	1.00 (0.21)	1.00 (0.21)	1.00 (0.21)	1.00 (0.21)	1.00 (0.21)
LDL-C, mmol/L	2.42 (0.77)	2.44 (0.79)	2.45 (0.79)	2.46 (0.80)	2.51 (0.80)	2.46 (0.79)
Triglycerides, mmol/L	1.55 (0.64)	1.57 (0.65)	1.58 (0.67)	1.58 (0.66)	1.59 (0.67)	1.57 (0.66)
HbA1c, %	6.05 (1.66)	6.09 (1.70)	6.10 (1.71)	6.11 (1.73)	6.13 (1.76)	6.10 (1.71)
eGFR, ml/min/1.73m <sup>2</sup> *	101.5 (15.9)	101.8 (16.2)	101.6 (16.4)	101.9 (15.8)	101.5 (15.9)	101.7 (16.0)
<b>Prior disease †</b>						
Coronary heart disease	314 (1%)	334 (1%)	328 (1%)	414 (2%)	511 (2%)	1,901 (1%)
Stroke	261 (1%)	269 (1%)	302 (1%)	284 (1%)	298 (1%)	1,414 (1%)
Cancer	318 (1%)	326 (1%)	314 (1%)	304 (1%)	318 (1%)	1,580 (1%)
Diabetes ‡	4,600 (17%)	4,969 (19%)	4,966 (19%)	5,037 (19%)	5,224 (20%)	24,796 (19%)
Other §	2,308 (9%)	2,195 (8%)	2,200 (8%)	2,202 (8%)	2,208 (8%)	11,113 (8%)

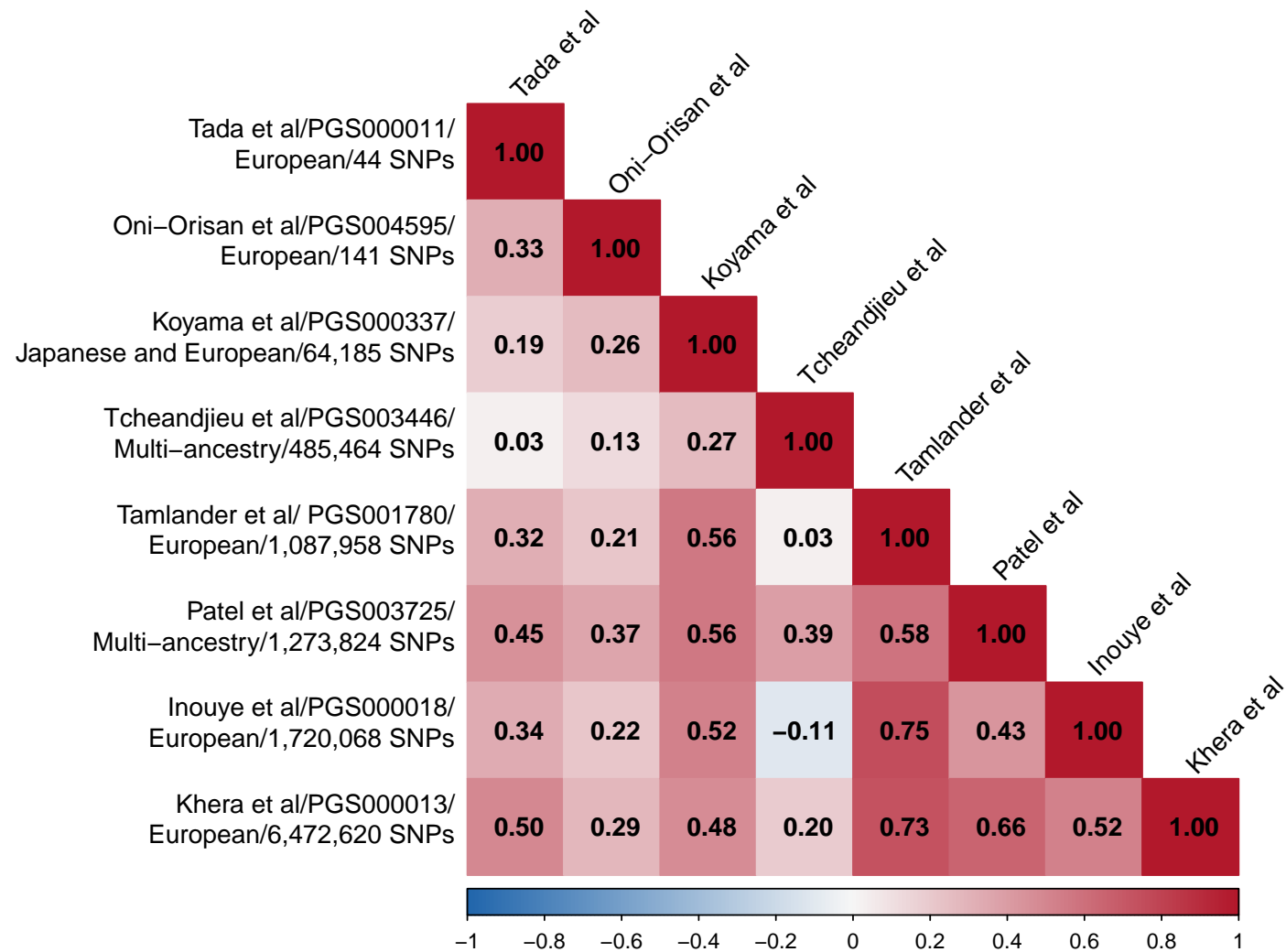
Numbers are n (%) or mean (SD). SBP=systolic blood pressure, DBP=diastolic blood pressure, BMI=body mass index, HDL-C=high density lipoprotein cholesterol, LDL-C=low density lipoprotein cholesterol, HbA1c=glycosylated haemoglobin A1c

\* Calculated using the 2021 CKD-EPI equation, based on NMR-measured creatinine levels.

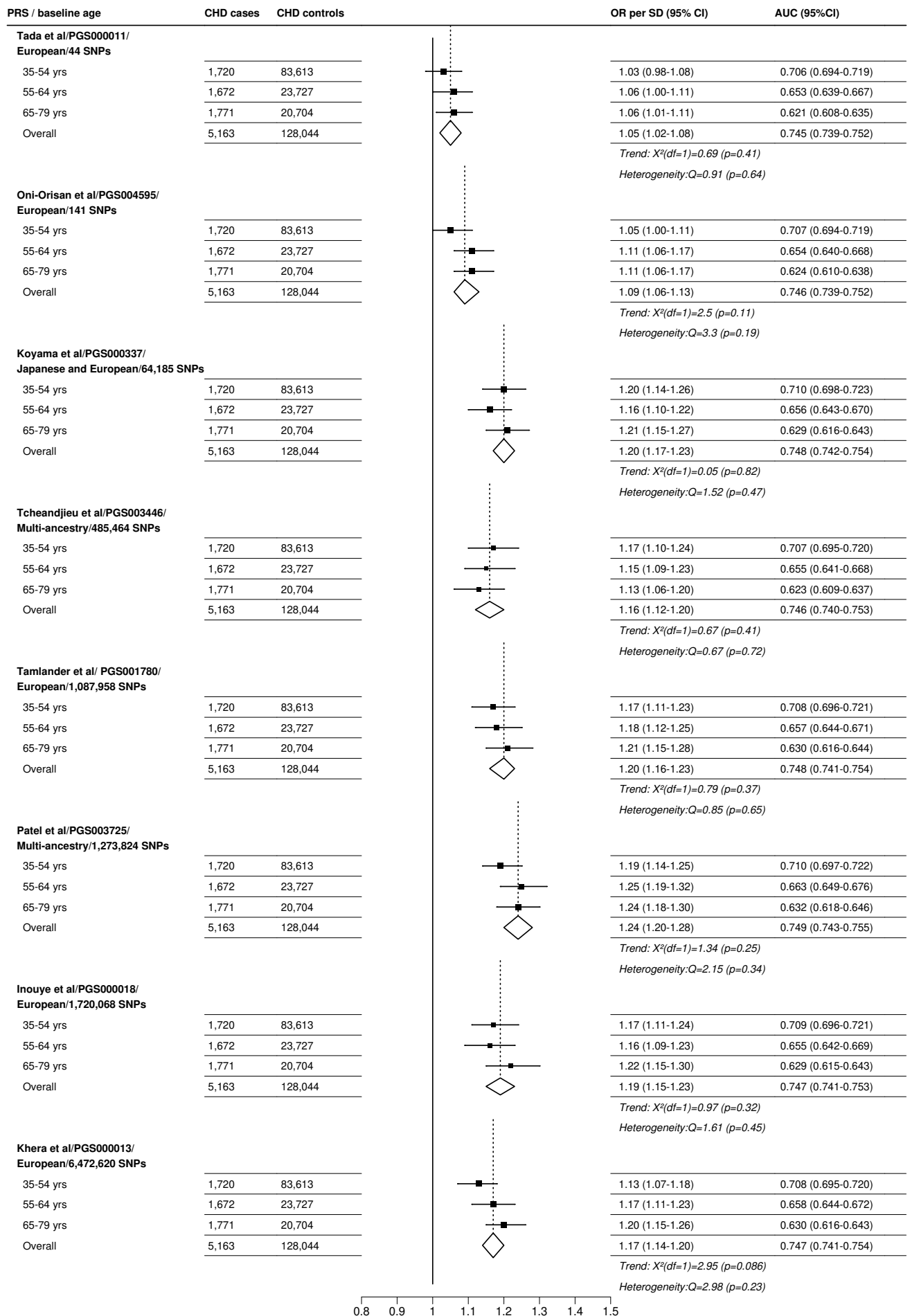
† Self-reported previous diagnoses unless otherwise stated.

‡ Self-reported previously-diagnosed diabetes or glycosylated haemoglobin ≥6.5%.

§ Other diseases include self-reported emphysema, chronic kidney disease, peptic ulcer, liver cirrhosis, and peripheral arterial disease.

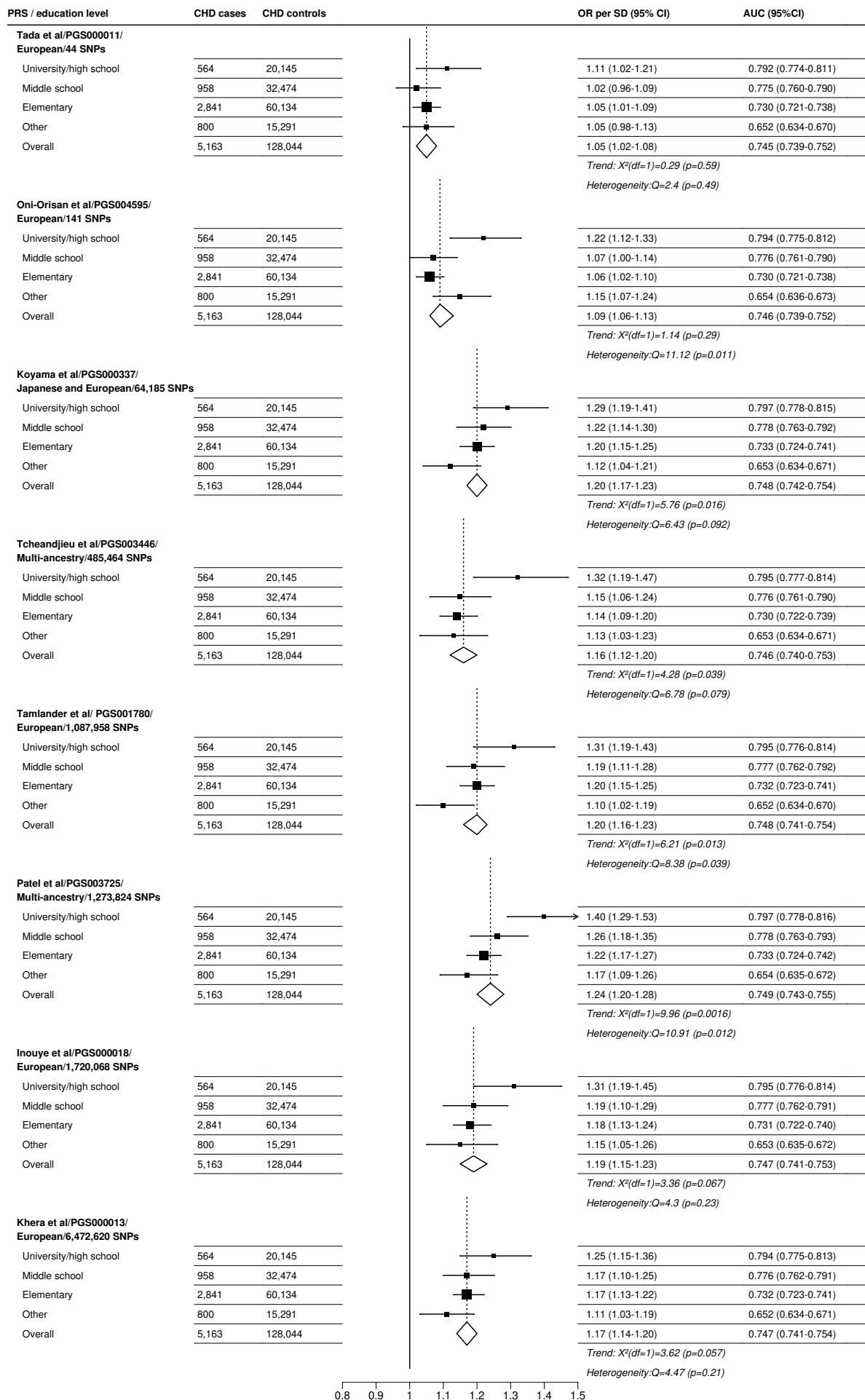


Webfigure 1: Pairwise correlations between the eight selected PRS



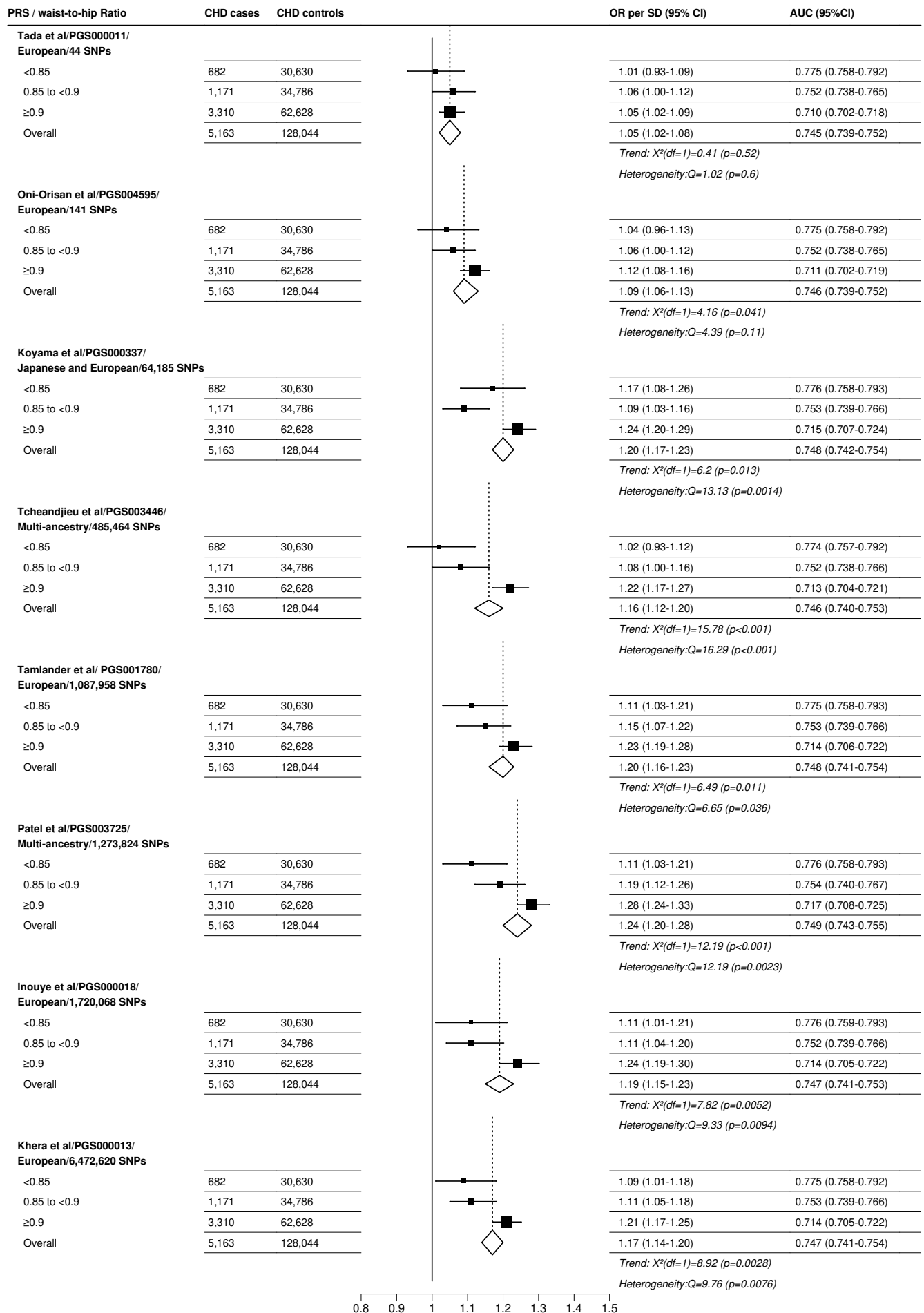
**Webfigure 2: Odds of CHD per 1SD increase in each PRS, by baseline age**

Subgroup-specific effects are from the fully adjusted model excluding age. The overall effect shown is from the fully adjusted model as shown in Figure 2.



**Webfigure 3: Odds of CHD per 1SD increase in each PRS, by highest level of education**

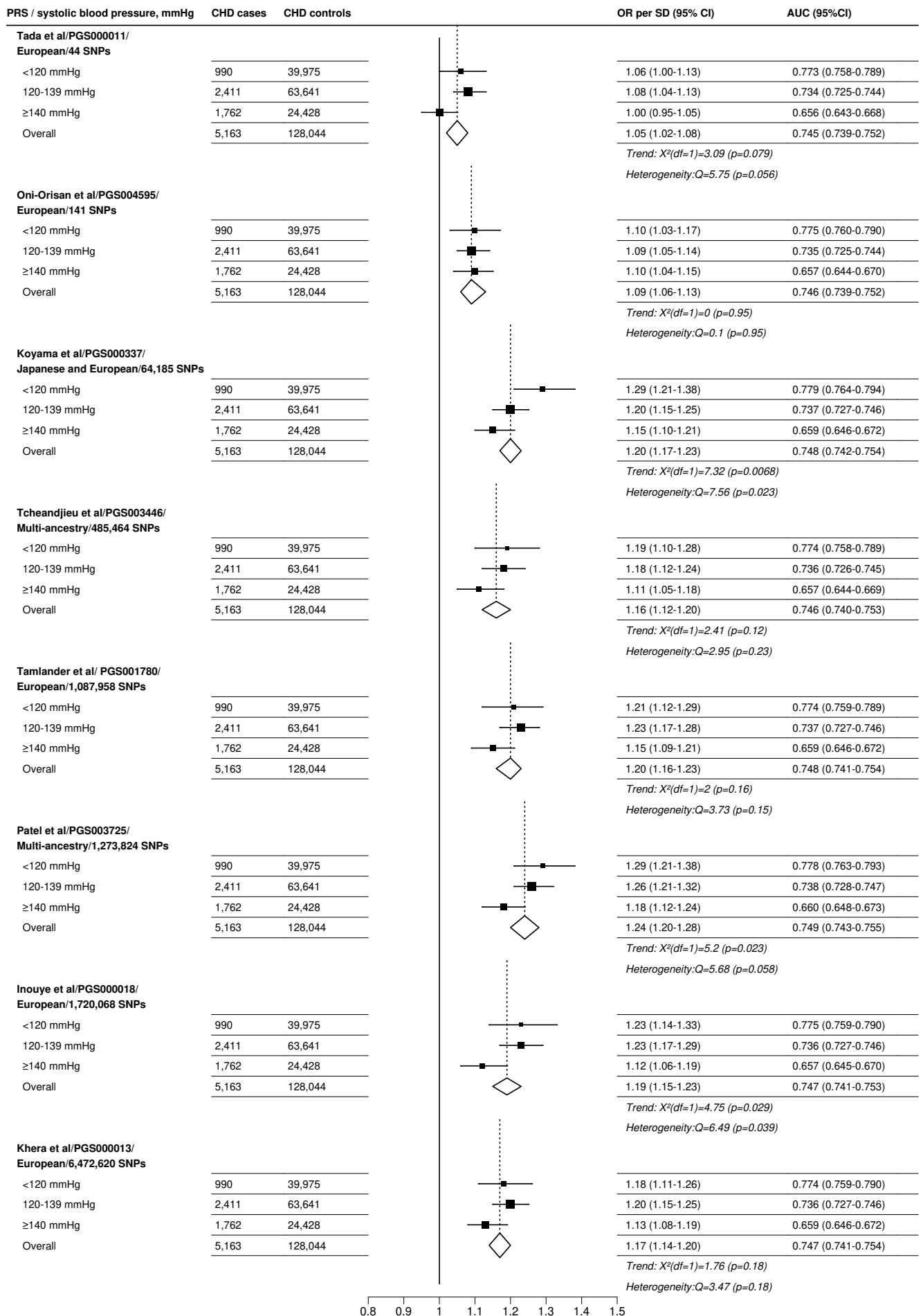
Subgroup-specific effects are from the fully adjusted model excluding highest level of education. The overall effect shown is from the fully adjusted model as shown in Figure 2.



**Webfigure 4: Odds of CHD per 1SD increase in each PRS, by waist-to-hip ratio**

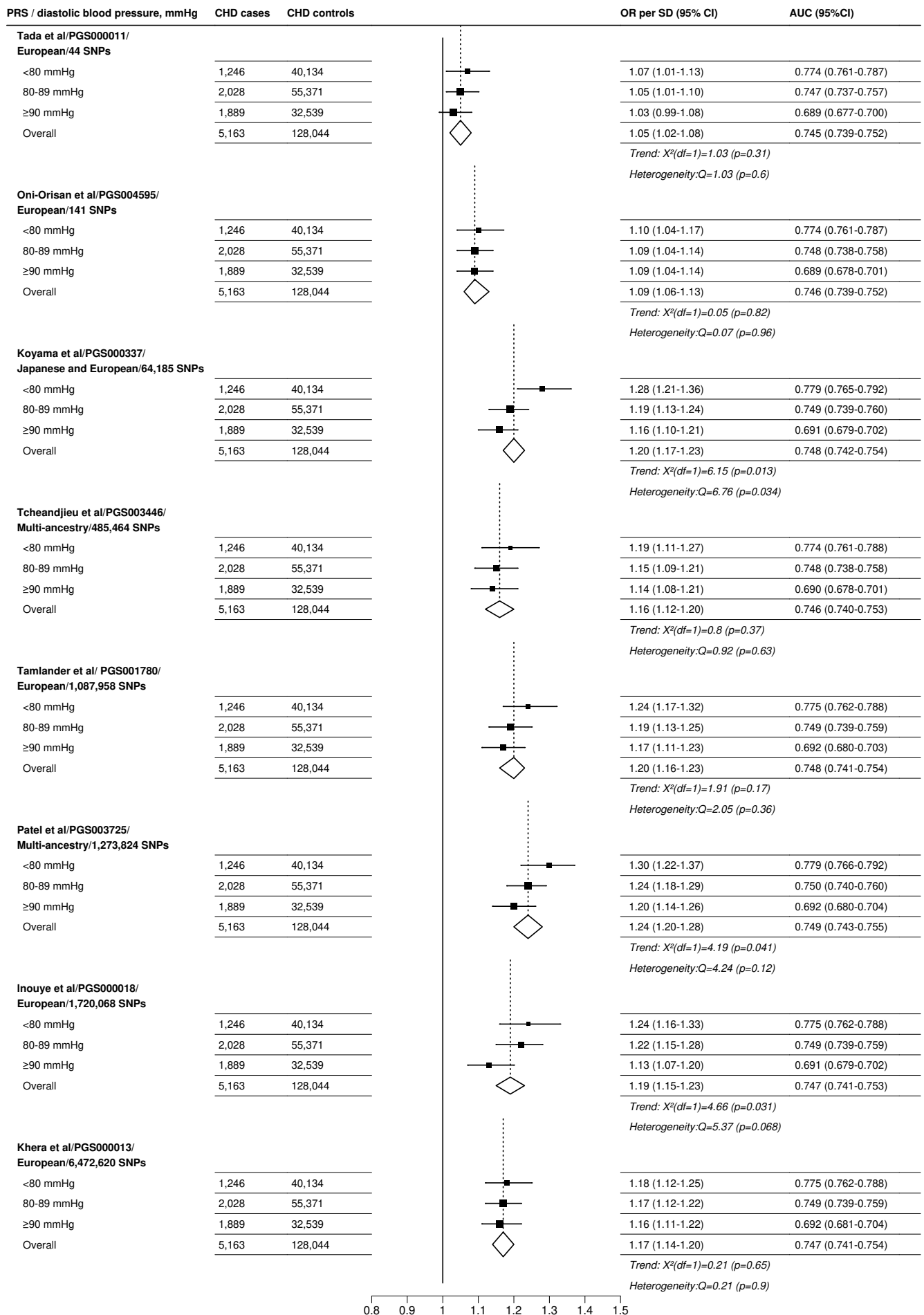
Subgroup-specific effects are from the fully adjusted model excluding waist-to-hip ratio. The overall effect shown is from the fully adjusted model as shown in Figure 2.





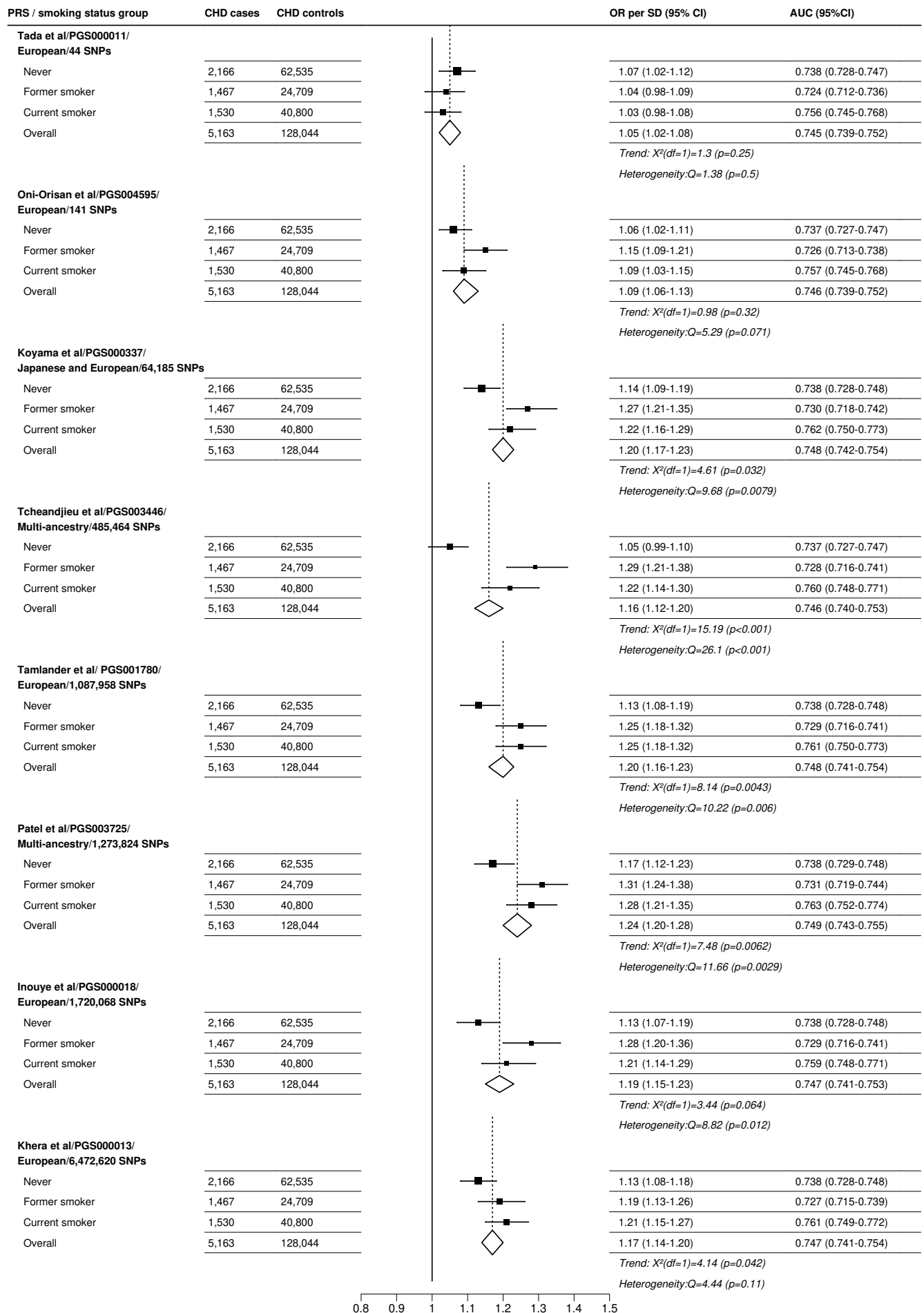
**Webfigure 5: Odds of CHD per 1SD increase in each PRS, by systolic blood pressure**

Subgroup-specific effects are from the fully adjusted model excluding systolic blood pressure. The overall effect shown is from the fully adjusted model as shown in Figure 2.



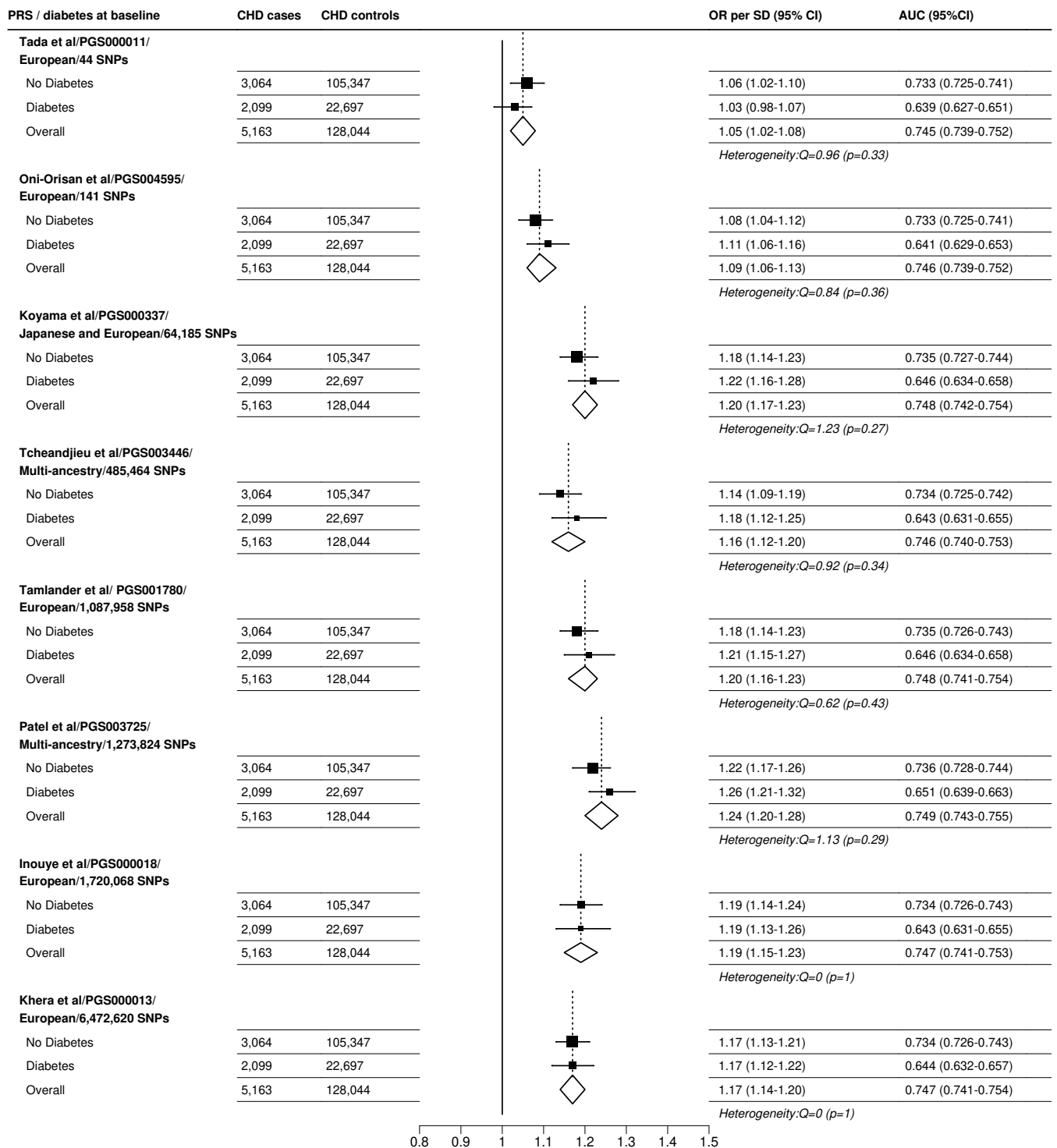
**Webfigure 6: Odds of CHD per 1SD increase in each PRS, by diastolic blood pressure**

Subgroup-specific effects are from the fully adjusted model excluding diastolic blood pressure. The overall effect shown is from the fully adjusted model as shown in Figure 2.



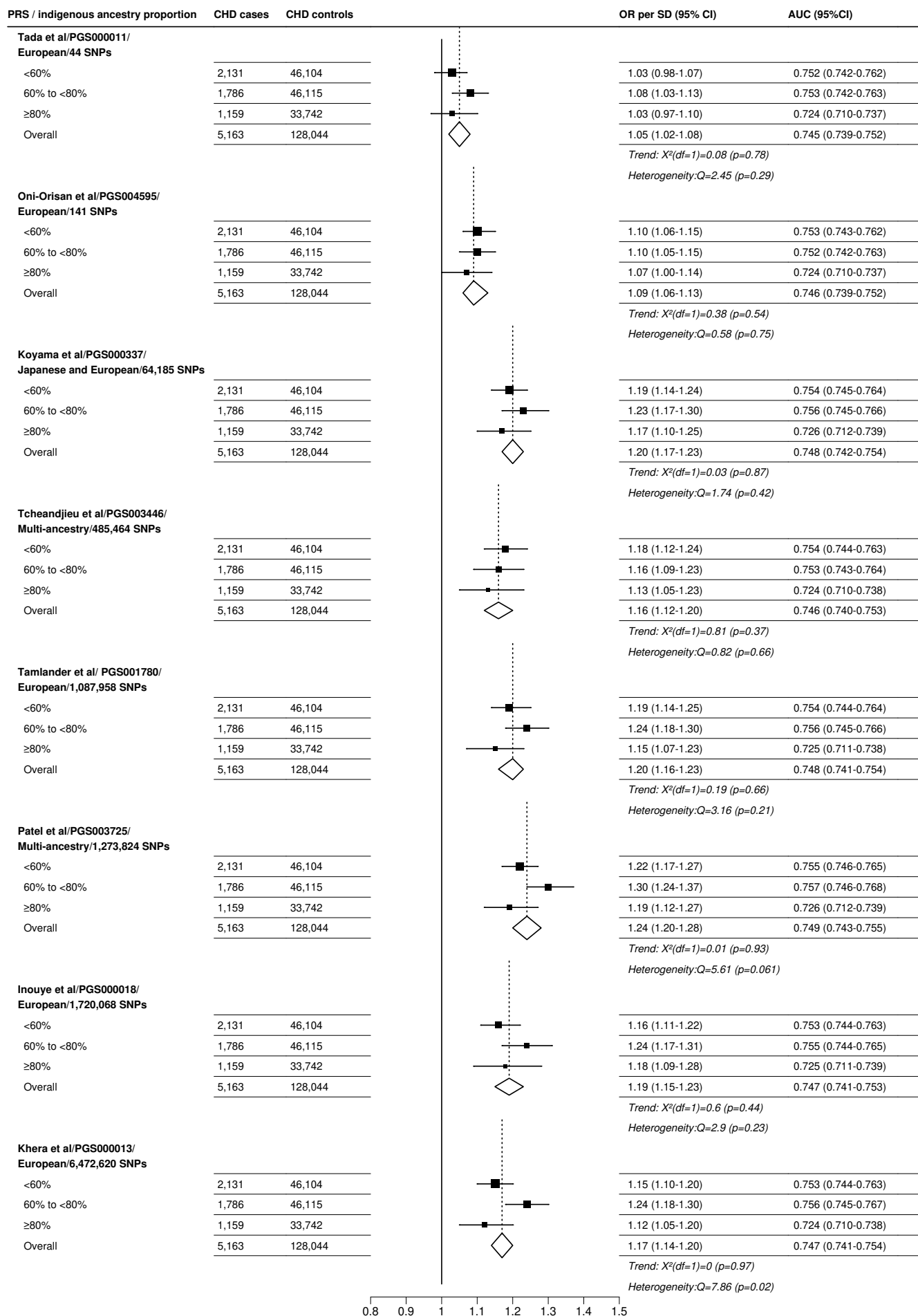
**Webfigure 7: Odds of CHD per 1SD increase in each PRS, by smoking status**

Subgroup-specific effects are from the fully adjusted model excluding smoking status. The overall effect shown is from the fully adjusted model as shown in Figure 2.



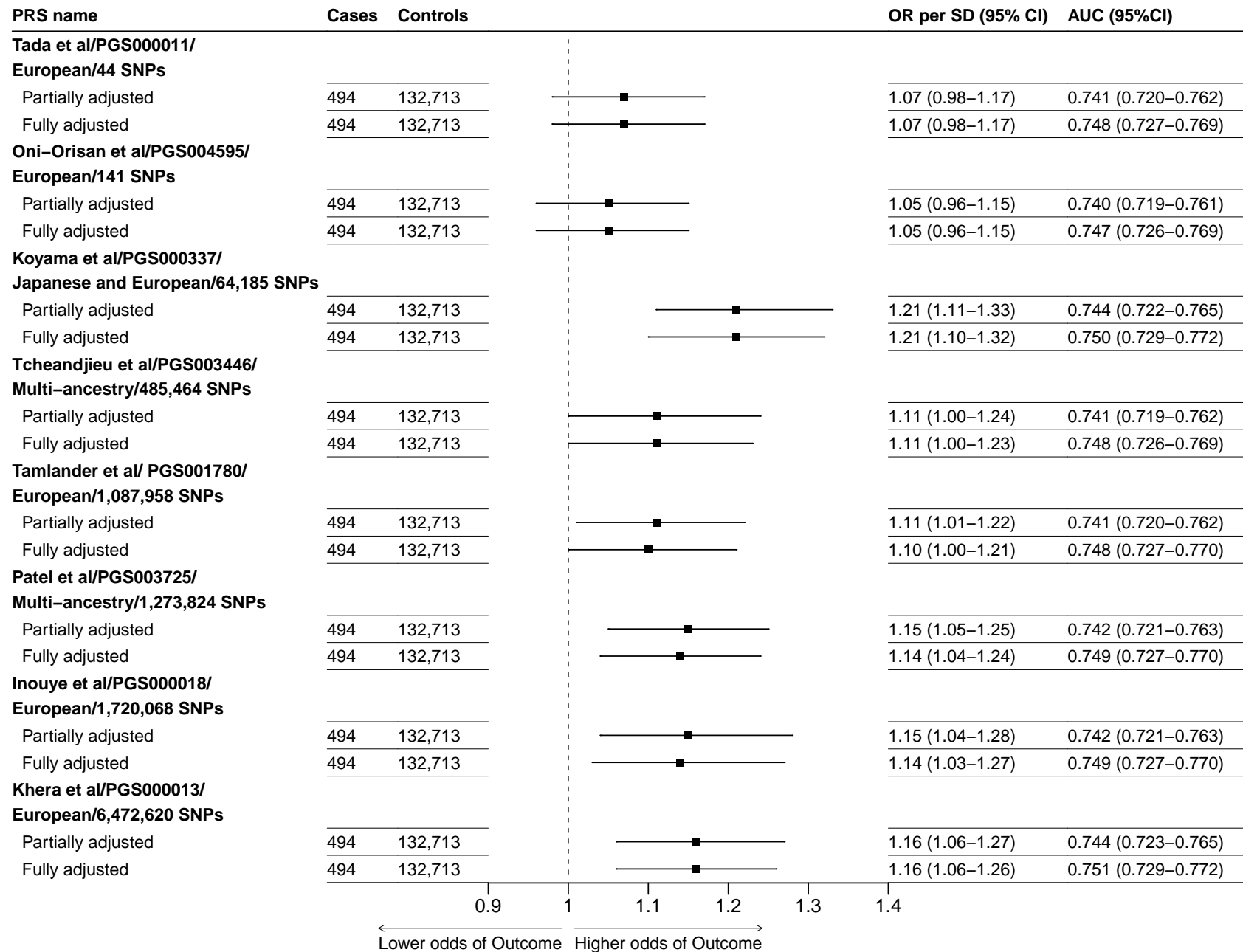
**Webfigure 8: Odds of CHD per 1SD increase in each PRS, by baseline diabetes status**

Subgroup-specific effects are from the fully adjusted model excluding baseline diabetes status. The overall effect shown is from the fully adjusted model as shown in Figure 2.



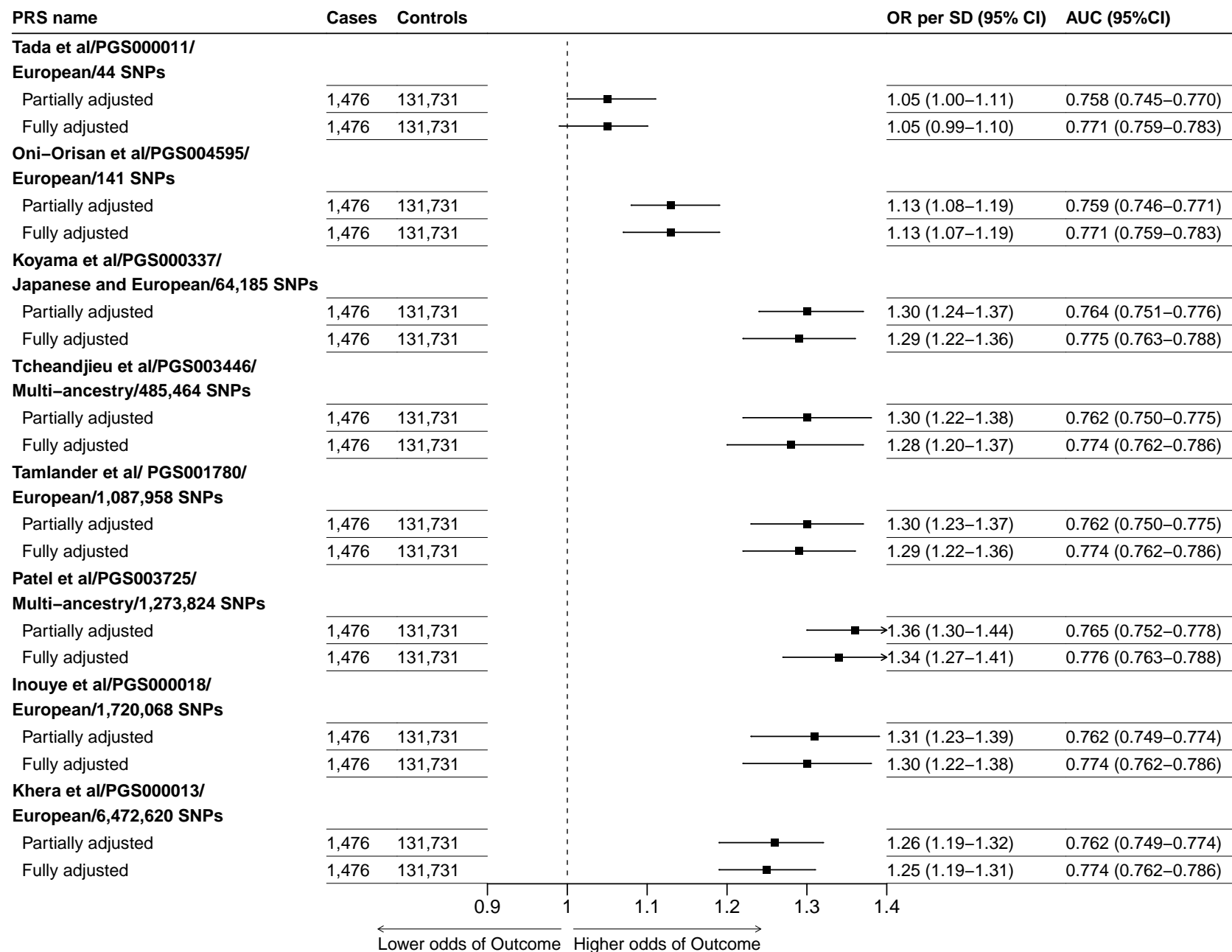
**Webfigure 9: Odds of CHD per 1SD increase in each PRS, by level of Indigenous American ancestry**

Subgroup-specific effects are from the fully adjusted model. The overall effect shown is from the fully adjusted model as shown in Figure 2.



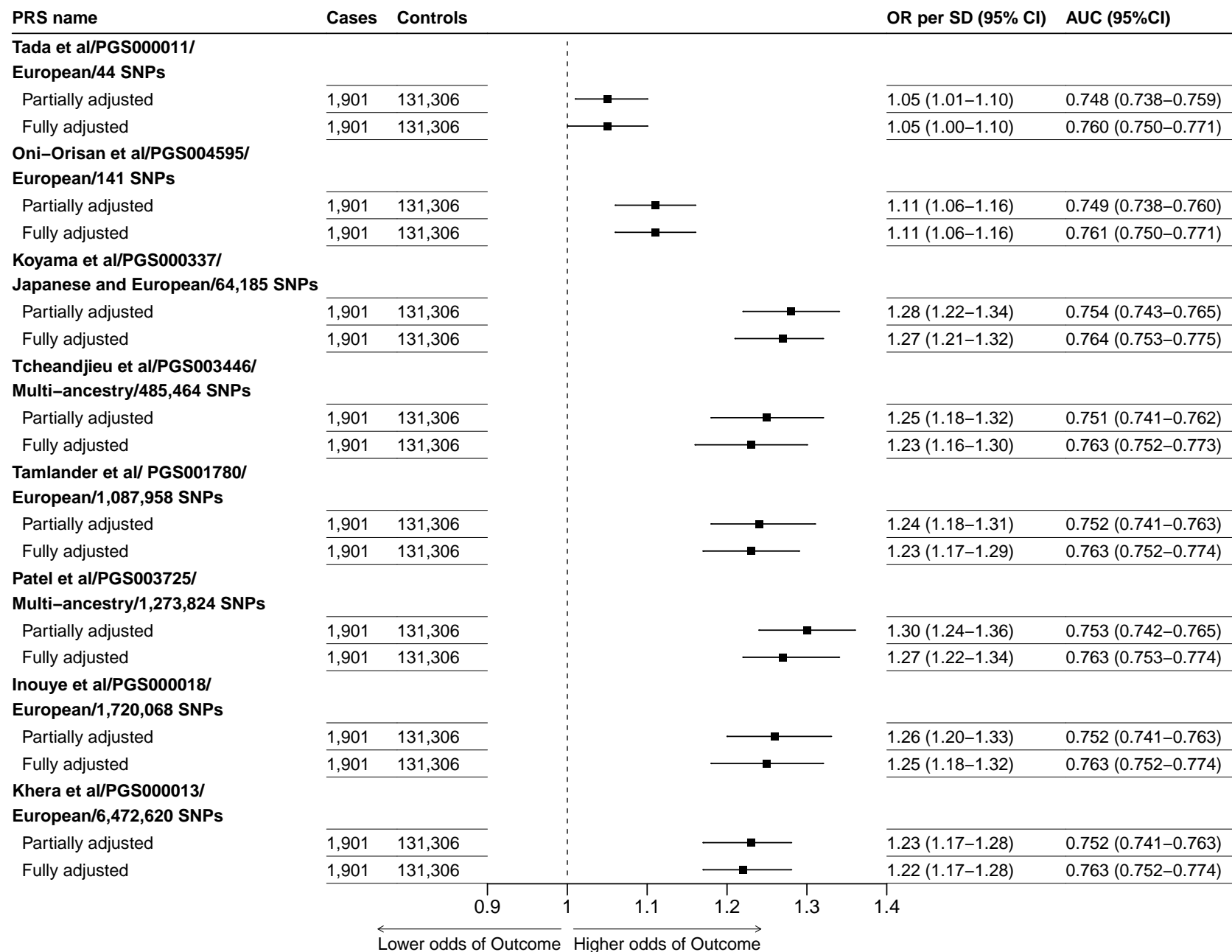
**Webfigure 10: Odds of baseline self-reported angina per 1SD increase in each PRS, for participants aged 35-79 years at recruitment**

Analyses as for Figure 2.



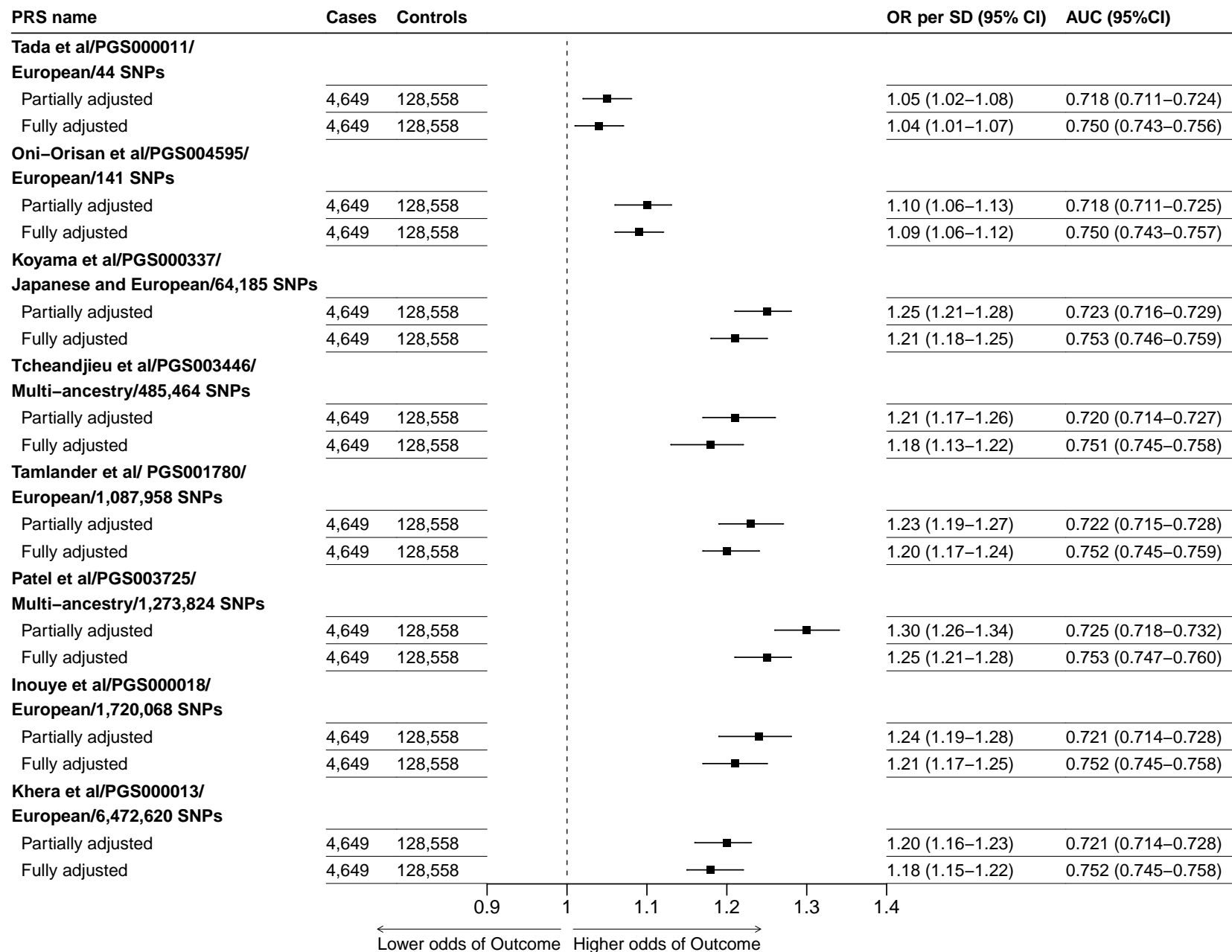
**Webfigure 11: Odds of baseline self-reported myocardial infarction per 1SD increase in each PRS, for participants aged 35-79 years at recruitment**

Analyses as for Figure 2.



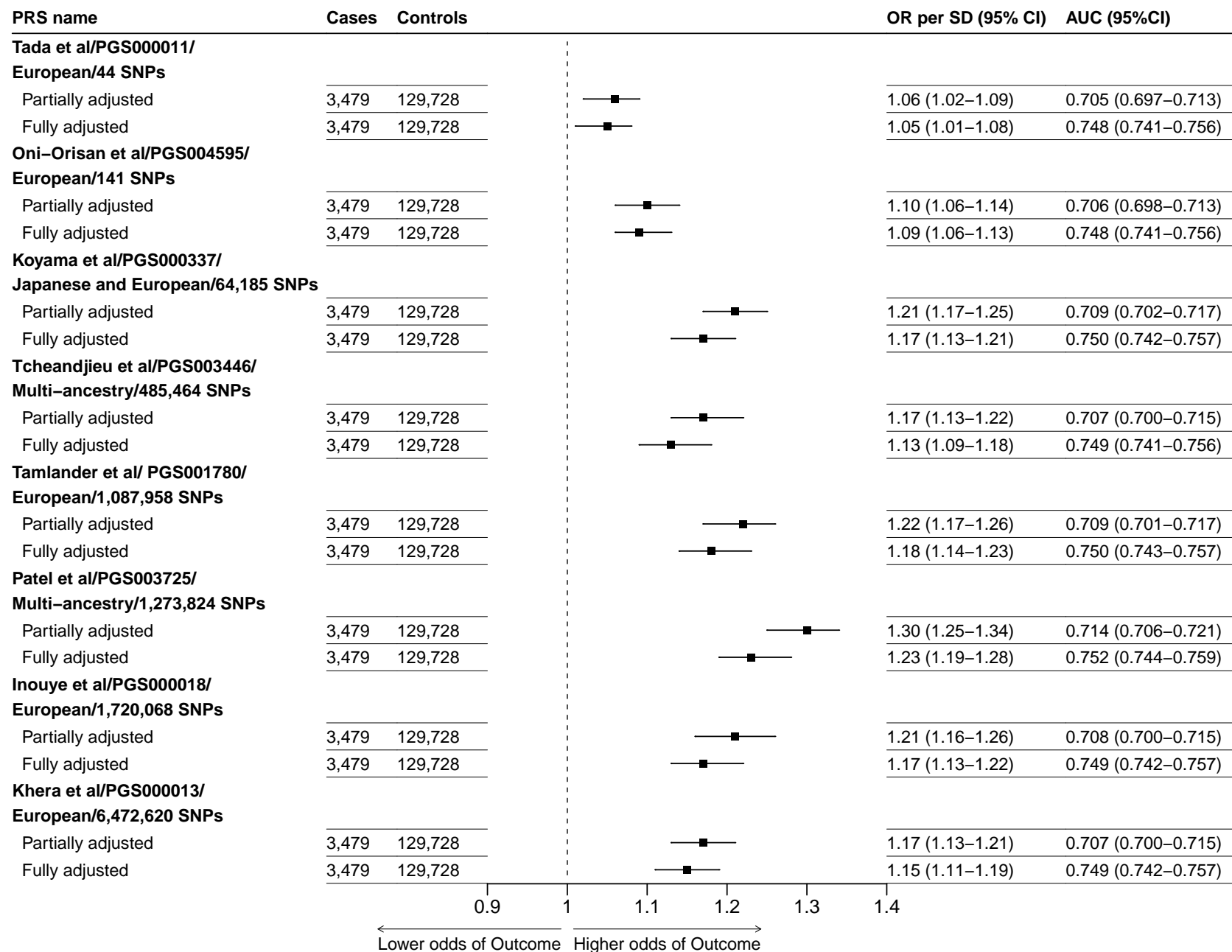
**Webfigure 12: Odds of baseline self-reported angina or myocardial infarction per 1SD increase in each PRS, for participants aged 35-79 years at recruitment**  
Analyses as for Figure 2.





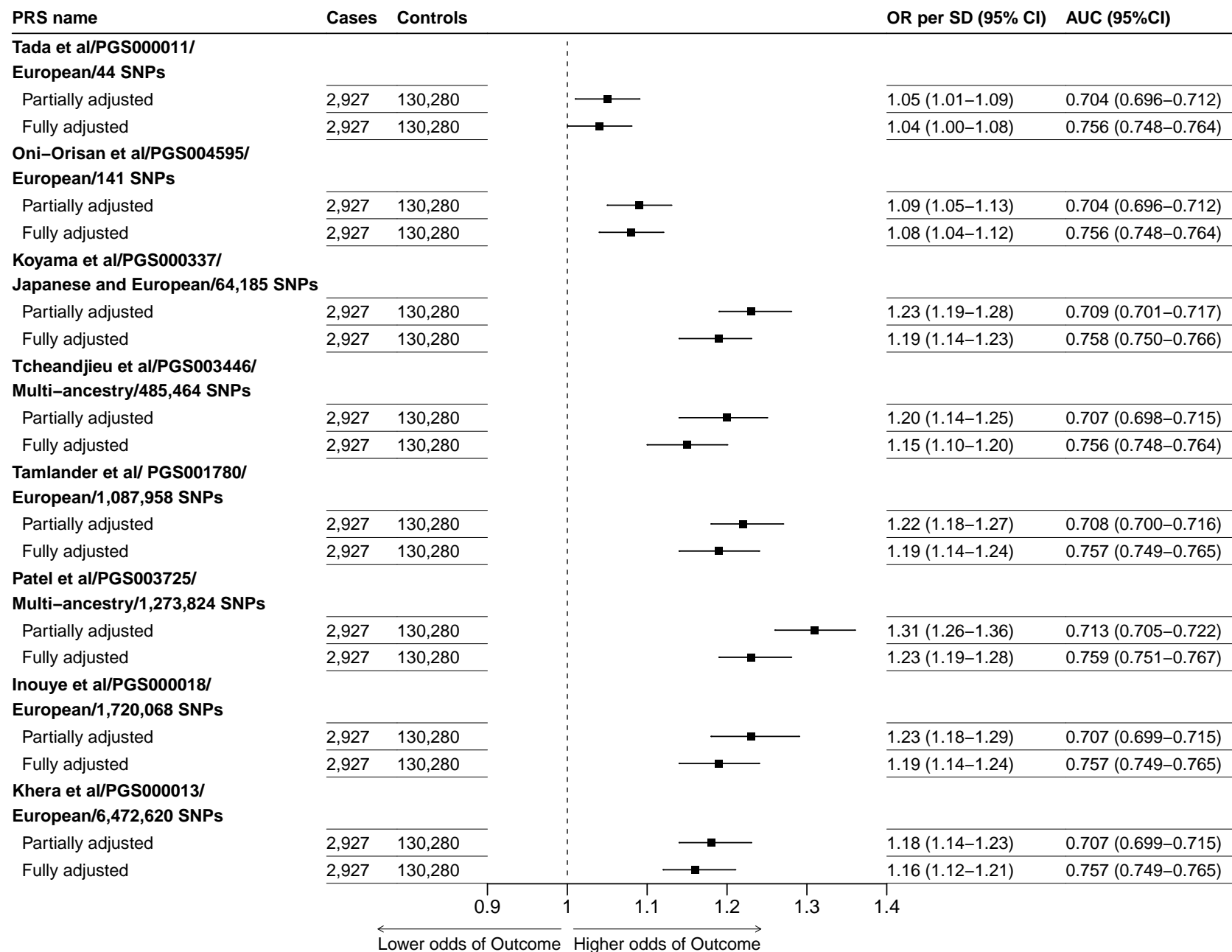
Webfigure 13: Odds of CHD (now defined as baseline self-reported angina or myocardial infarction, or death before age 80 with CHD listed as the primary cause of death) per 1SD increase in each PRS, for participants aged 35–79 years at recruitment

Analyses as for Figure 2.



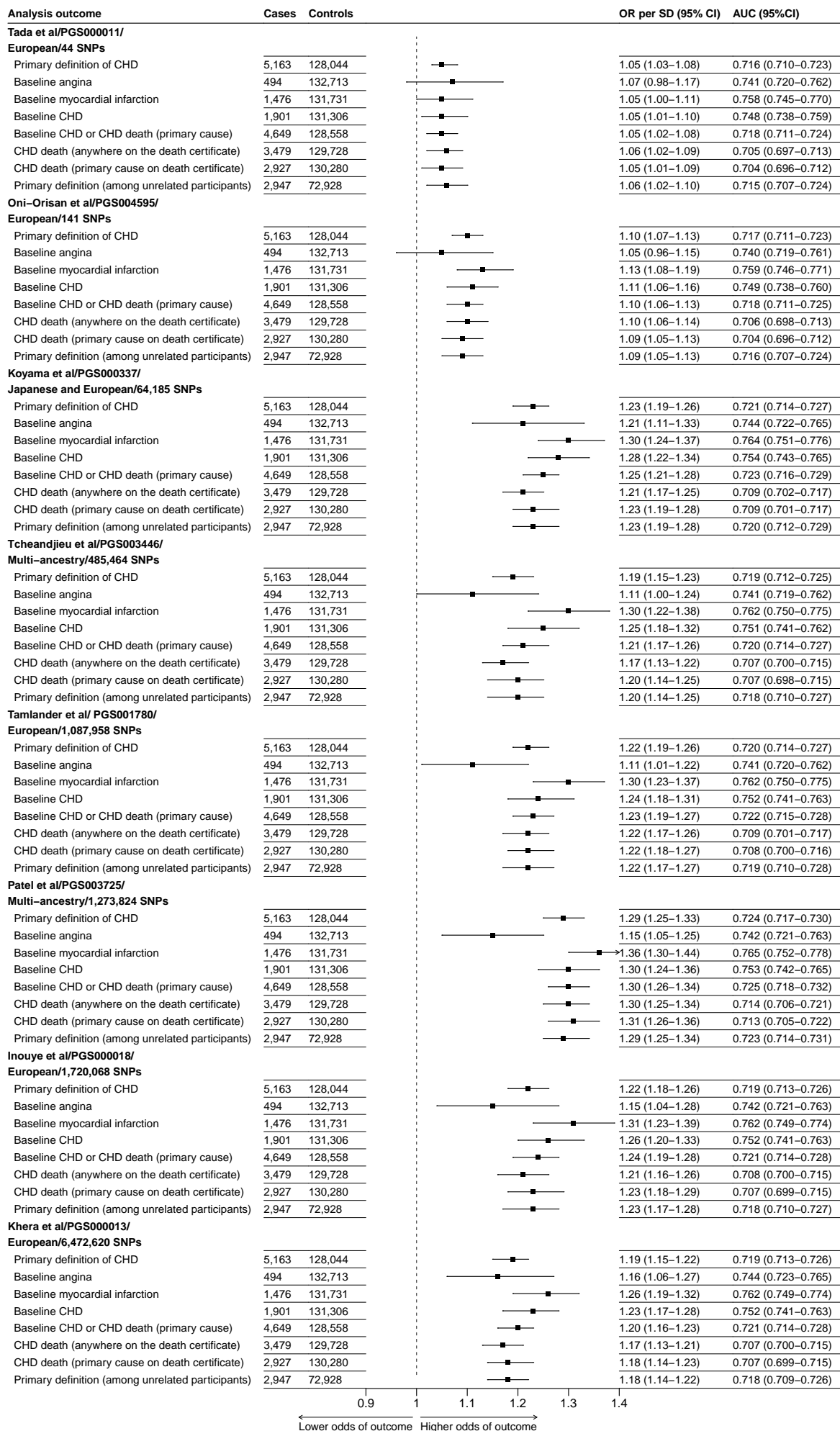
**Webfigure 14: Odds of death before age 80 with CHD listed anywhere on the death certificate, per 1SD increase in each PRS**

Analyses as for Figure 2.



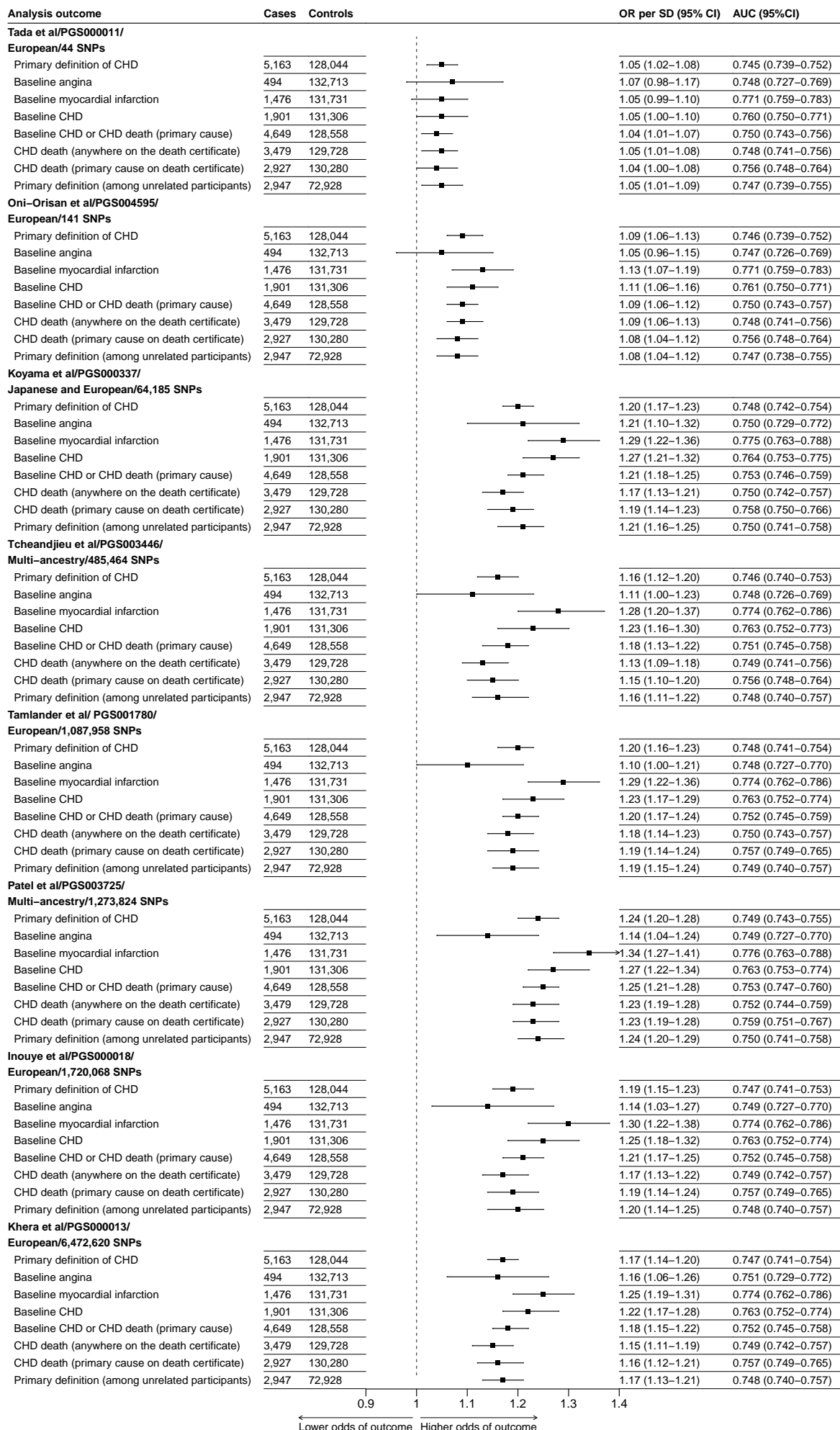
**Webfigure 15: Odds of death before age 80 with CHD listed as the primary cause on the death certificate, per 1SD increase in each PRS**

Analyses as for Figure 2.



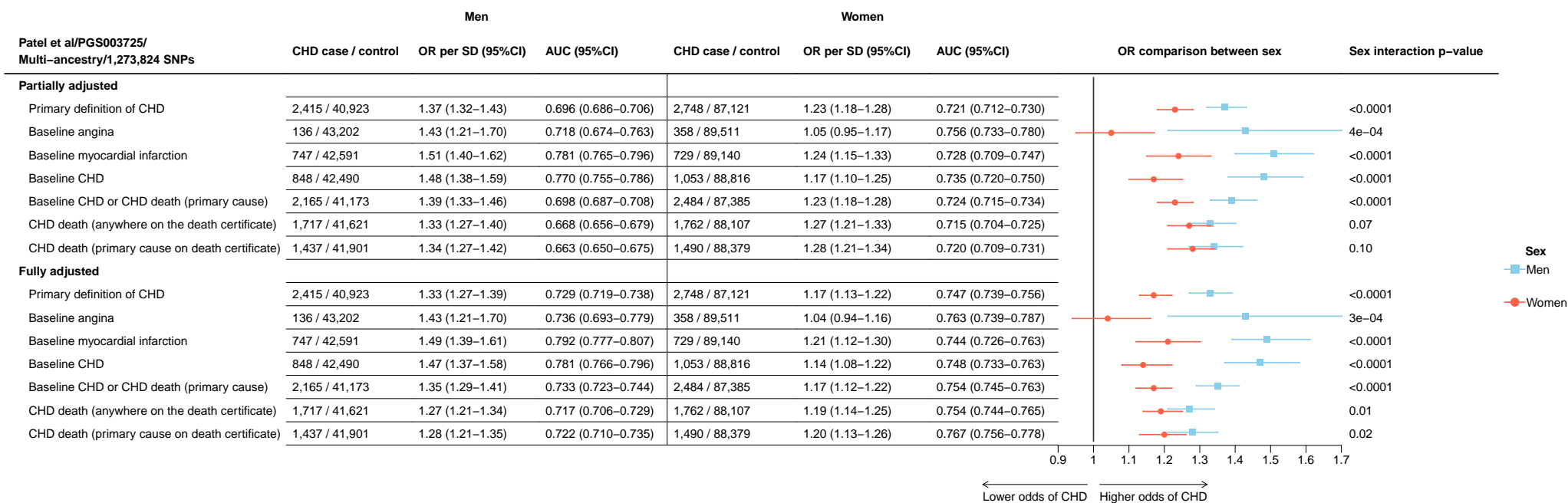
**Webfigure 16: Sensitivity analyses (varying the CHD outcome) with partial adjustments**

Odds ratios (ORs) were estimated with regression models adjusted for baseline age, sex and 7 genetic principal components.

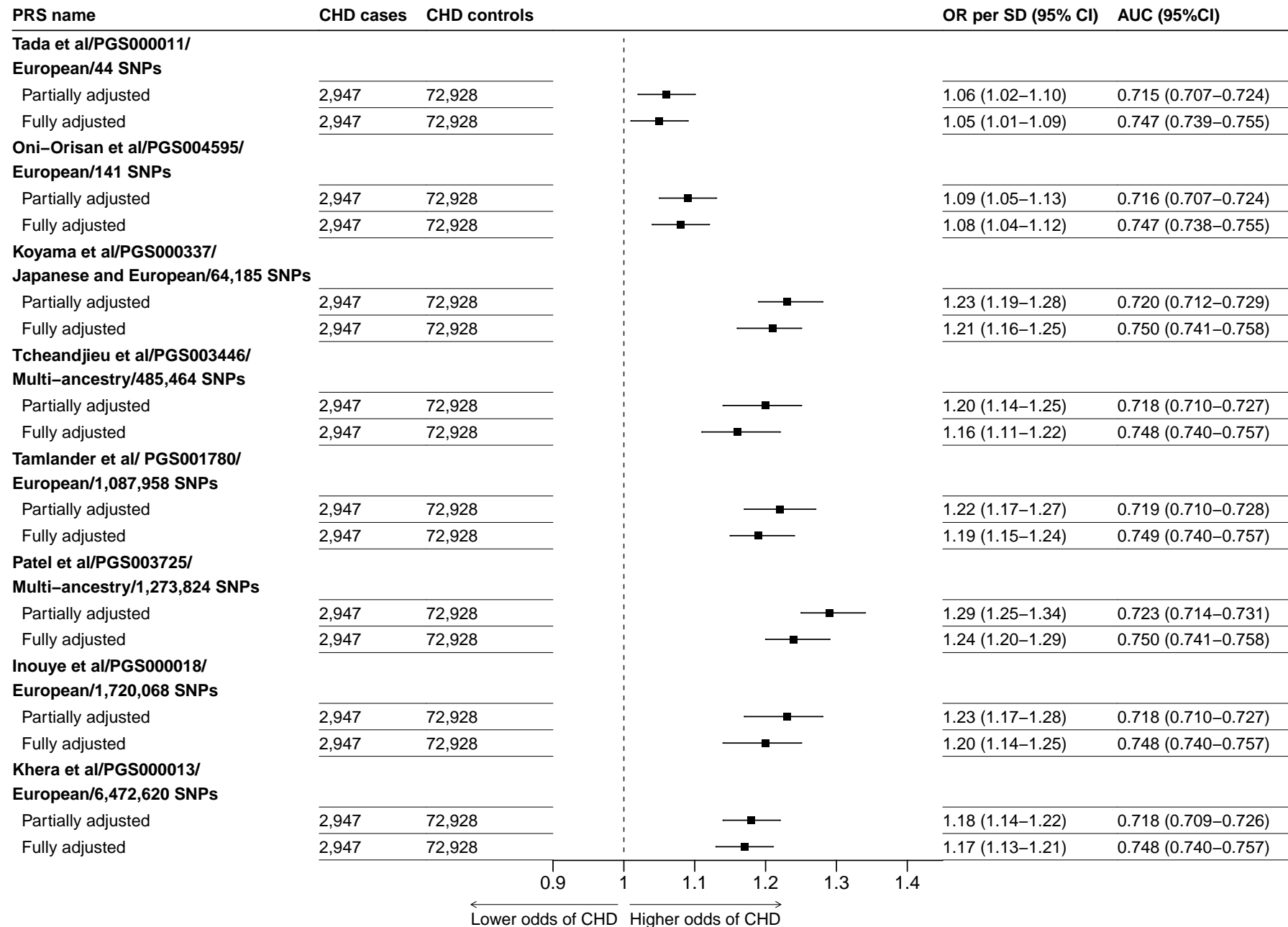


**Webfigure 17: Sensitivity analyses (varying the CHD outcome) with full adjustments**

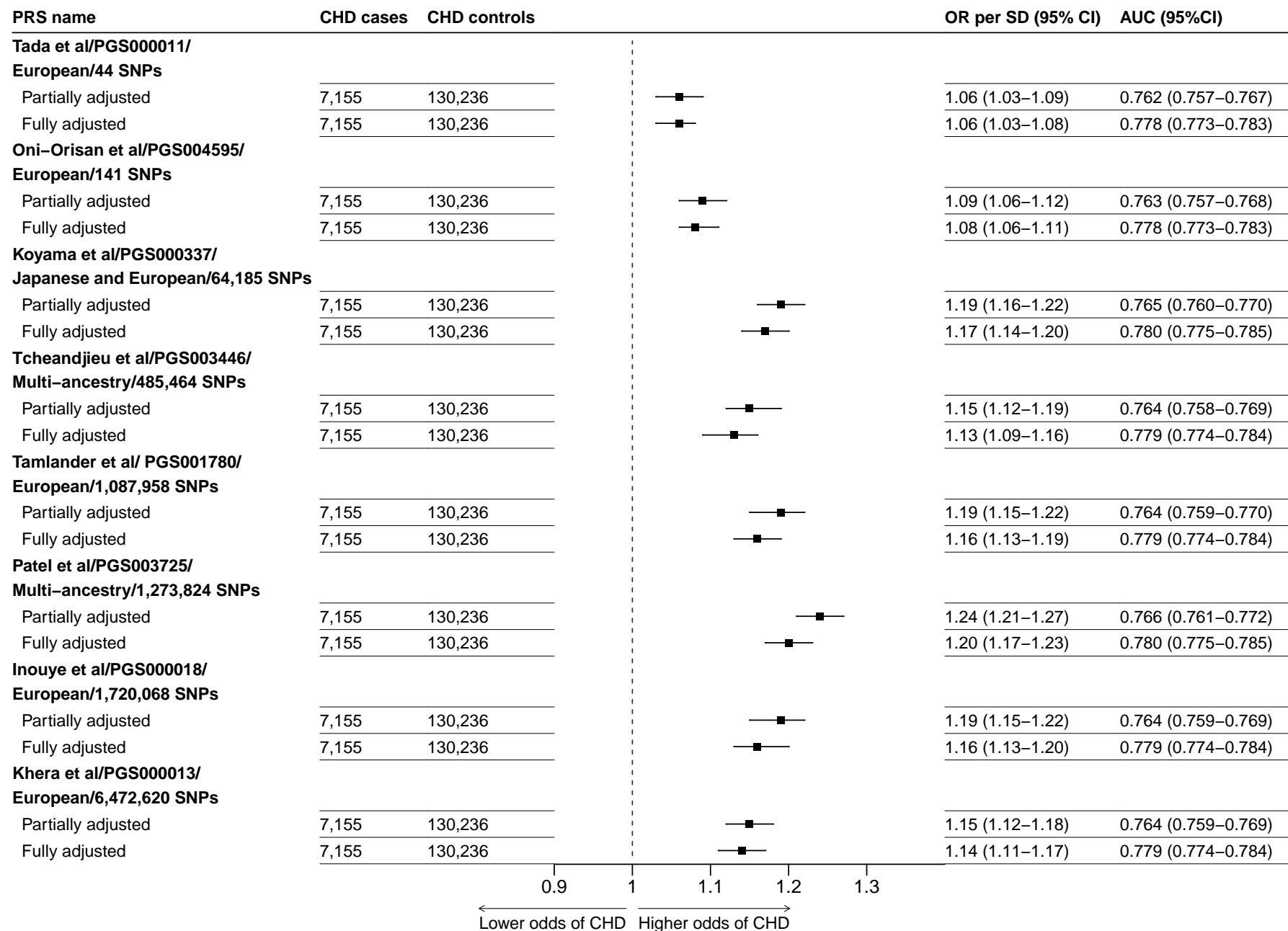
Odds ratios (ORs) were estimated with regression models adjusted for baseline age, sex, 7 genetic principal components, waist-to-hip ratio, systolic and diastolic blood pressures, education attainment level, smoking status, and diabetes at baseline.



**Webfigure 18: Odds of CHD (varying CHD outcomes) per 1SD increase for the Patel *et al.* PRS, by sex**  
 Analyses as for Figure 2.



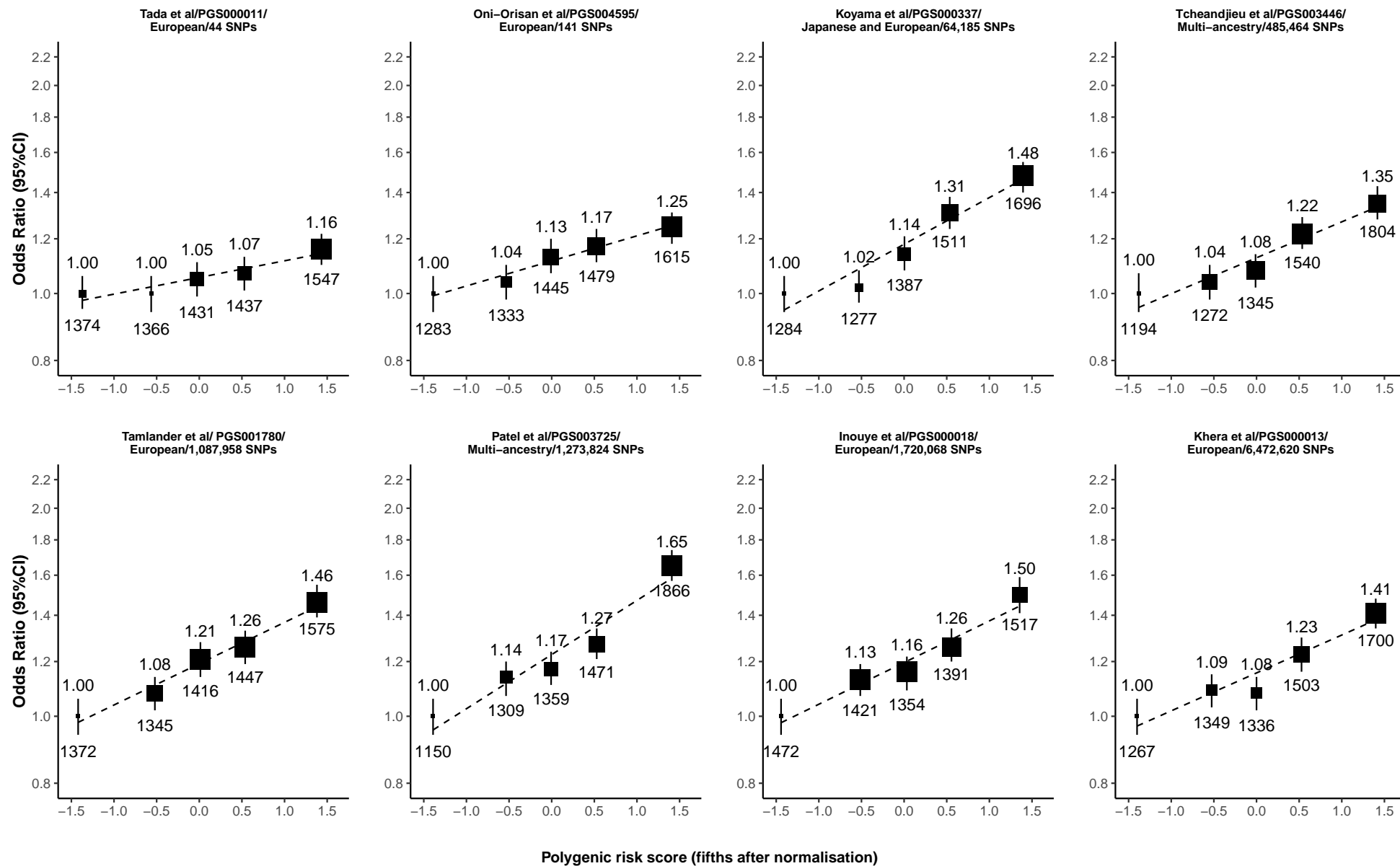
**Webfigure 19: Sensitivity analyses (primary CHD definition) among participants unrelated to the 3<sup>rd</sup> degree**  
Analyses as for Figure 2.



**Webfigure 20: Odds of CHD before age 90 years per 1SD increase in each PRS, among participants age 35-89 at recruitment**

Analyses as for Figure 2.





**Webfigure 21: Odds of CHD before age 90 years by fifth of each PRS, among participants age 35-89 years at recruitment**  
Analyses as for Figure 1.